

# C

## CIVILIAN MODEL

### SLIMFIT Mk-4 RESCUE PARACHUTE

User Guide

Document No. 80021320-HO Revision: 6



**PN: 80021310**

#### NOTICE

Proprietary and intellectual rights of Lite-Flite, Denmark, are involved in the subject-matter of this material and all manufacturing, reproduction, use, disclosure, and sales rights pertaining to such subject-matter are expressly reserved. This material is submitted for a specific purpose as agreed in writing, and the recipient by accepting this material agrees that this material will not be used, copied, or reproduced in whole or in part nor its contents (or any part thereof) revealed in any manner or to any third party, except own staff, to meet the purpose for which it was submitted and subject to the terms of the written agreement.



Lite Flite ApS  
Lufthavnsvej 8  
6580 Vamdrup  
Denmark

Tel +45 7558 3737  
Fax +45 7558 3758  
Mail [post@lite-flite.aero](mailto:post@lite-flite.aero)  
Web [www.lite-flite.aero](http://www.lite-flite.aero)

**RECORD OF CHANGES**

Description	Revision	Prepared		Review		Approved	
		By	Date	By	Date	By	Date
Fourth Issue	4					JCH	01.01.2007
Fifth Issue	5	JTK	23.03.2011			JCH	23.03.2011
Sixth Issue	6	JTK	10.11.2011			JCH	10.11.2011

**TABLE OF CONTENTS**

**RECORD OF CHANGES .....2**

**1. DISCLAIMER – NO WARRANTY .....3**

**2. LIMITATIONS.....3**

**3. LIFE LIMITS .....3**

**4. INSPECTION OF THE CANOPY.....4**

**5. REPAIRS .....4**

**6. ACTUAL USE .....4**

**7. PACKING.....5**

**8. PACKING TOOLS:.....17**

**9. ACCESSORIES .....17**

## **1. DISCLAIMER – NO WARRANTY**

Because of the unavoidable danger associated with the use of a parachute, neither the manufacturer of the canopy nor the manufacturer of the harness gives any warranty.

Parachuting is associated with great risks and can lead to serious bodily injury or death.

We cannot advise using the Lite-Flite parachutes, unless the user agrees to assume the risks associated with it and have the requisite training and insight into the use of parachute equipment.

Parachutes can sometimes operate inadvertently, even though they are designed, manufactured, assembled, packed, maintained and used in accordance with all regulations. Malfunctions can result in disability or death.

Because of the risks associated with the use of parachutes, Lite-Flite assumes no liability and makes no warranty, either expressed or implied.

Lite-Flite disclaims any responsibility for damage caused by the use of parachute equipment and does not provide any form of compensation.

The liability of LITE FLITE is limited to replacement of defective parts found upon examination by manufacturer to be defective in material or workmanship within 60 days after its purchase, and which has not been caused by accident, striking, improper use, alteration, tampering, excessive use, misuse or abuse.

## **2. LIMITATIONS**

The maximum deployment speed of the assembly is 140 knots.

The maximum gross weight (Pilot + clothing + equipment) is 242 lbs

## **3. LIFE LIMITS**

Life time of a Lite-Flite emergency parachute expires after 20 years from date of manufacture.

- Provided the assembly passes the periodic inspections as described in section 5.

# FFE PRESERVE I CANOPY MODEL 201 (-C)

## 4. INSPECTION OF THE CANOPY

Inspections to be done by a licensed parachute rigger or master rigger only.  
Ensure that the canopy is assembled properly according to LITE FLITE manual.  
Check that the connector links are properly tightened. Never over tightened.  
Ensure that steering toggles are installed on steering lines routed through guide rings.  
Check for any damage to canopy material or suspension lines.  
Canopy material is sensible to acid and UV-rays.  
Check for any stains or possible soiling by chemicals.  
Determine that there are no foreign objects inside the canopy or entangled with lines.  
If the assembly fails inspection, it must be removed from service and repaired as described in section 6.

## 5. REPAIRS

No major repairs or any alterations are authorized.  
Any repairs accomplished in the field, must be of a nature that no disassembly of any portion of the canopy is necessary. Any such maintenance must be returned to LITE FLITE.  
Repairs such as a small patch, (Less than 20cm by 20cm), may be accomplished by any appropriately certified senior or master parachute rigger with the facilities to do so. Any repair must be accomplished in accordance with the procedures in Dan Poynters Parachute Manual.  
Both above mentioned repairs are limited to 1 per gore, 3 per canopy.

## 6. ACTUAL USE

After leaving the aircraft, pull the blank opening handle positioned on the left shoulder strap.  
The canopy is steerable.  
By pulling the red steering toggles the canopy can be turned into the wind to secure a safe landing.  
Larger steering effect may be accomplished by pulling the right or left rear riser.  
This method is to be used on demand.

To minimize landing injuries, keep your feet together, protect your face and keep your elbows together in front of your chest.

## 7. PACKING

Place the canopy on the packing table and connect tension devices at both container and apex ends.  
Replace damaged rubber bands on diaper.  
Flake the canopy following procedures from Dan Poynters Parachute Manual, 11 to each side.  
Ensure the diaper is underneath the canopy.  
Check each gore on each side and ensure that no fabric is wrapped into the next gore.  
Check the skirt band and apex band to be straight.



Align the skirt band and up fold 45° parallel with the main seams.



Fold the canopy lengthwise in thirds.  
Fold it once more towards the centre (Fifths)  
Place shot bags or weights on the canopy to keep it in order during further packing.



Release tension and pull container towards the canopy.  
Form a loop of the suspension lines above the top of the diaper.  
Leave enough room to close the diaper



Form a loop of suspension lines. No more than 3-4 cm.  
Close the diaper starting with the top rubber band  
through the top grommet.  
Continue with the centre grommet.  
Replace all damaged, loose or worn out rubber bands.



Bring the bottom rubber band through the bottom grommet.



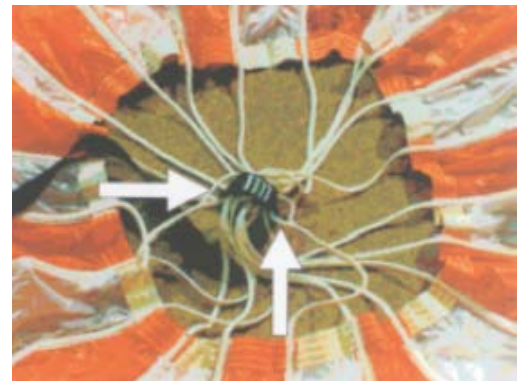
Close the bottom flap on top of both side flaps using a line loop of  
no more than 3-4 cm.



Finish stowing of the remaining suspension lines lengthwise using line loops of no more than 4 cm.  
Complete the packing according to the following instructions for SLIMFIT packing.



It is mandatory that the pilot chute bridle be installed through both positioning loops on 2 apex vent lines and around all the other vent lines.  
It must have a stitching through the loop to prevent the bridle from tightening around the vent lines.



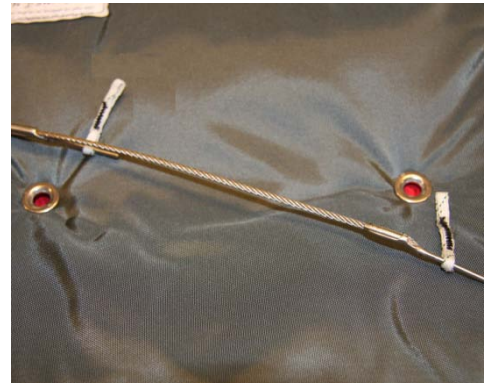
With a fixed wrench size 9 check that connector links are tightened. Never over tightened.



Check that toggles are in correct place on the Velcro.



Short loop (3,5-4cm) to be put on the top ripcord pin.  
Long loop (4,5-5cm) to be put on the end ripcord pin.



Route both loops through each their grommet in the bottom of the container.  
Insert a pull up cord in each loop.



Keep the loops in place in the container by knotting the pull up cords together.



Close the Velcro corners on the container's top flap





The diaper with the lines to be stowed in a bottom corner of the container, ensuring that it fills out the corner completely.



One extra short loop of canopy fabric to be stowed in the opposite bottom corner of the container.  
Stove properly to completely fill out the corner.



One loop of canopy to be routed sidewise across the container followed by half a loop towards the centre.



Fold up and down along the middle covering flaps.



Dress the canopy into the container's top corners.



Fold the middle covering flaps out over the canopy to each side, including bottom and top.



Pull the pull cords up and route them through the grommets in the top and bottom flap. Older models have a slightly longer top flap and are packaged with the bottom flap on the outside.



Pull up the loops and insert temporary pins.



**IMPORTANT:**

Pull hard the innermost covering flaps towards the sides in order to move canopy fabric away from the pilot chute bed.



The pilot chute bridle cord is routed out under top flap.



Have the pilot chute packing retainer ready.



Compress the pilot chute in the retainer, aligning the top and bottom grommets.



S-fold the pilot chute bridle cord and place it in the valley between the grommets.



Place the pilot chute on top of the bridle cord. It is **IMPORTANT** that release and warning flags from pilot chute packing retainer and retainer pin are pointing to the right hand side of the container, same side as the side flap with Velcro cover!!



Pull up cords are routed through the pilot chute's grommets.

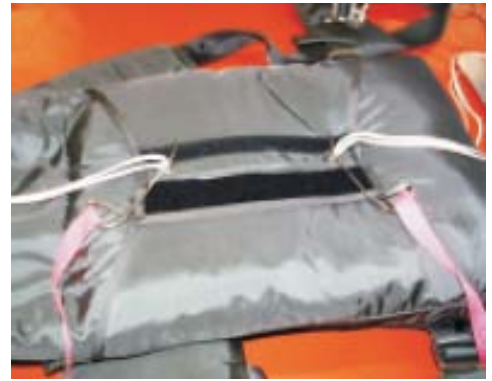
Left hand Side flap is secured with the temporary pins.



At this stage remove retainer pin and pilot chute retainer in that particular order.



Close right hand side flap with temporary pins



While you hold the closing loop with the pull up cord and the tightening tools, you remove the top temporary closing pin. Carefully install one of the S-hooks in the closing loop.



Slowly and carefully remove the pull up cord from the loop. Form a 2m long pull up cord into a large loop with a slip knot. Place this large loop in the other S-hook.



Put the large loop around your knee or foot to be able to expand the spring with your leg. While you hold the closing loop with the pull up cord and the tightening tools, you remove the temporary closing pin.



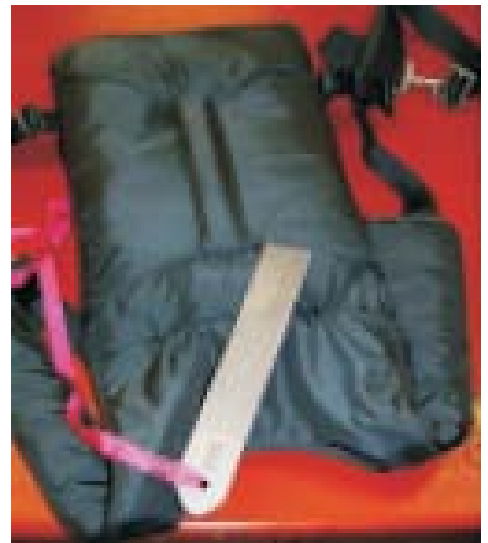
Carefully install the S-hook in the closing loop.  
Be aware not to damage the loop.



Slowly and carefully remove both pull up cords.



Dress the parachute with the dressing tool.



Flip over the container and check that both ripcord pins are correctly in place.  
Seal if applicable.



Place the back pad on Velcro stripes.



Count your packing tools.



Your parachute is ready.



**AFTER PACKING, REMEMBER YOUR PAPERWORK !**

## **Personal notes:**



## 8. PACKING TOOLS:

60030030 Dan Poynter: The Parachute Manual  
20153080 Pull up cords, 3mm, 200cm, 2 ea  
20150145 Shot bag (Packing weight)  
20150150 Temporary closing pins, 2 ea  
20150135 Pilot Chute retainer with flagged closing pin  
20150180 Dressing tool  
20150154 Pull up handle  
20150153 Pull up plate  
20150155 Pull up chair

## 9. ACCESSORIES

90011605 Connector links # 5 Stainless Steel  
20090080 Toggles, set of 2  
80023112 Short closing loop, 3,5 - 4,5 cm  
80023113 Long closing loop, 4 - 5 cm  
20120022 Rubber bands, ¼ kg  
20050380 Pilot chute for Slimfit  
20070203 Pilot chute bridle cord  
20101490 Ripcord  
80023108 Opening spring with 2 S-hooks  
80022510 Back pad, semi sheep  
80022520 Back pad, nylon duck  
60030211 Packing Instructions, GB, MK-4 (This manual)  
60031020 Parachute record  
80022102 Transport bag