

OWNER'S GUIDE OF



SEVEN

BasiK Air Concept
2010 RN 97 - 83340 Le Luc - France
tel: +33 (0)494 99 12 36 - basik.fr@free.fr

Edition n°1 - february 2009 - revision 1

Table of contents

Overview	page 2
Parts List	page 3
Closing loops lenght	page 4
AAD (Argus, Cypre and Vigil) Installation	page 5
Closing the reserve container	page 6-10
Setting the main canopy	page 11
New main toggles	page 12
Closing the main container	page 13-19
RSL and handles	page 20
End fitting housing	page 21-23
3 ring assembly and gear check	page 24
Rigging and maintenance	page 25
Additional for Student version	page 26-31
Pictures	page 32

Advance	Size	SN#	Manufacturing date
.....

Introduction

After creating the Advance H/C, BasiK Air Concept is proud to present to you its new H/C named Seven. We have been working hard to have this new Advance Seven ready. It keeps the same general envelope with the no reserve side flaps concept but a lot of new features have been added to it. Why Seven? Only because it has 7 new main points. You will discover in this manual these new features and how to deal with them.

It took several years to design and test the Seven between its first original draw and its first sales. All these passing years have helped us to verify how we could integrate our ideas and how they could be worth by keeping the main idea of the Advance OUT system. You just have to follow all the instructions of this manual to assemble and pack the Seven H/C. Just remember, you must be qualified to do such work, if not, ask your rigger to do it for you.

Advance Seven comes with the following options included at no extra cost:

Hip rings

Velcro-free toggles

Front loop risers

Custom harness size

Custom colors*

Kill-line main pilot chute

Riser covers secured by magnets

3D spacer foam back pad and leg pads

Throw out pouch with free-fly pad secured by magnets

Z knife on ring cover

Leg strap junction

* According to available list

The Advance Seven container system has been tested in accordance with AS-8015B. It is approved under TSO C-23d and French certification QAC 121.

Parts List

The Advance Seven container system is delivered with the following components:

- Harness and container
- Main risers with steering toggles
- Main deployment bag with kill-line pilot chute or bunjie installed
- Breakaway handle
- Reserve handle
- Reserve free bag and bridle*
- Reserve Pilot chute**
- Reserve steering toggles
- Main closing loop
- Reserve closing loop
- One extra main closing loop
- Rubber bands
- Owner's guide

All Advance Seven harnesses are manufactured AAD-ready. FXC setup is an option.

No other brand component can be used with the Advance Seven container system.

All components listed above can also be purchased individually from BasiK Air Concept and its official dealers. Seven limitations of use are 110 kg at 150 kts.

BasiK Air Concept cannot be held responsible in case of an use over these weight and speed limits except for Student sizes 3 and 4 which are certified at the same airspeed but at a weight limit of 130 kg.

* Only the Advance Seven reserve free bag can be used with the Seven container system.

** Only the Advance OUT reserve pilot chute can be used with the Advance OUT and Seven container systems.

Repack cycle must be done up to your own country regulations. We allow a 1 year packing cycle maximum for all of our Advance H/C systems.

Main and reserve closing loop length chart

Advance OUT - IN

H/C Size	Canopy size	Reserve loop length
Taille sac	Taille voile	Taille Loop secours
Z	120	8,5 cm
X	120	8,5 cm
0	135	8,5 cm
Y	150	8,5 cm
1	170	9 cm
2	190	9 cm
3	220	9 cm
4	245	8,5 cm

Seven

H/C Size	Canopy size	Reserve loop length	Main loop length
Taille sac	Taille voile	Taille Loop secours	Taille Loop principal
0	120	9,5 cm	3 cm
1	120	9,5 cm	3 cm
2	135	9,5 cm	3 cm
3	150	9,5 cm	3 cm
4	170	9,5 cm	3 cm
5	190	10 cm	3 cm
6	190	10 cm	3 cm
7	220	10 cm	3 cm
8	245	10 cm	3 cm
9	265	10 cm	3 cm

Tandem

H/C Size	Canopy size	Reserve loop length	Drogue double loop
Taille sac	Taille voile	Taille Loop secours	Double loop
1	402	10,5 cm	5,5 cm
2	402	10,5 cm	5,5 cm

Le marquage fixant la longueur de la boucle doit être placé juste au dessus du nœud de blocage
The mark on the loop must be set over the knot when made



Les longueurs données correspondent à la boucle finie
Above length are set for a finished loop

AAD setup

Install the AAD main unit into its pocket, cable connexion must be facing downward. Stow remaining cables and close the protecting scratch flap. Route the cutter and the control unit into the white type 4 /1.5" channel. Put the cutter into its protective chanel and do not forget to install the **closing loop through the cutter hole**. Route the control unit toward the collar then through the slit at collar level.



Slip the control unit into the back-pad and stowed it in its slot. Close the protecting flap. Installation is done. It is possible to install the control unit in the right ring cover (only available under request for student unit with adapted cable length).



For Advance Seven IN container type, please report to the Advance IN additional guide.



Reserve container closing instructions for the Advance SEVEN

This chapter deals with the procedures for packing a ram air reserve canopy into the Advance Seven container system. Assembly and packing of the reserve must be accomplished by a certified rigger, or by the manufacturer of the Advance Seven container system. Before starting to pack, fill your rigger's log book copy down the type of canopy, S/N and DOM from canopy data panel.

Required tools:

One temporary pin (with warning flag attached)

One pull-up cord (120 cm minimum length)

One packing paddle or long bar

One T bar

Two 15 cm strips of 2,54 cm velcro loop

The closing loop must be at the right length (report to the last page for the appropriate length).

Make a thorough inspection of all components of the reserve parachute. Reserve pilot chute, reserve bridle, free bag, reserve canopy, lines, slider, connector links, harness and container system.

Follow the canopy manufacturer's directions for the inspection, attachment to risers, routing of control lines, attachment of steering toggles, setting deployment brakes, and for flaking and folding the reserve canopy. We highly recommend the Pro-pack for all ram-air reserves packed into the Advance Seven container system. This Pro-pack can be done in different manners. The purpose of this guide is not to explain to you how to pack a reserve canopy but only how to set the free-bag into the Advance Seven container system. However, because of the new shape of the reserve container, it is important to fill correctly both upper corners and the bottom of the free-bag. Avoid to have a lot of material in the sides of the free-bag. This filling must be symmetrical to help you get a good secure hold of the two upper side closing devices.

Set the deployment brakes on each side by pulling the control line down through the guide ring until the brake loop passes through it. Insert the stiffened upper portion of the toggle through the loop and pull it up tightly against the guide ring. S-fold the slack between the toggle and the brake-set, and stow it under the elastic located on top of the guide ring. Mate the scratch on the toggle with the one located on the riser.



Place the bulk of canopy on each bottom side of the free bag. Lock the mouth of the free-bag by making two stows with the suspension lines in the safety stow. Stow the remaining of suspension lines in the line-stow pouch on the back of the bag. This is where it is useful to use the velcro strips mentioned in the list of tools. Cover the hook velcro on the pouch with the strips of loop velcro while stowing the lines into the pouch. S-fold the lines making sure to match the full width of the pouch.



Leave a slack of 40 cm from the free bag to the risers. Remove the strips of loop velcro and mate the velcro at the mouth of the pouch, making sure that none of the suspension lines are trapped by the closure.

Prepare the reserve container. If the AAD is installed, thread the reserve closing loop through the AAD cutter (if not already done), and then the pull-up cord through the reserve closing loop. Lay the reserve risers in the container so that the connector links are in the lower corners of the container.



Thread the pull-up cord and the reserve closing loop through the grommet of the free-bag. Lay the bag in the container with the lines stow pouch facing down. Lay the lines protection flap located over the AAD pouch on the free bag. Secure with the temporary pin. The bridle must stay over the reserve container. S-fold 30 cm of bridle up and down on the upper part of the free bag. Close the two upper closing devices by setting them over the two corners of the free bag. Thread the elastic through the grommet and secure it with 3 cm maximum of the free bag bridle after making a needle fold to the bridle. Always keep the bridle toward the reserve container to avoid any misrouting during the closing procedure.



"S" fold the remaining free-bag bridle up and down below the closing loop axis. Route the pull-up cord through the pilot chute and out through the cap. Be careful to not route through in and out the springs. Seat the lower end of the pilot chute on top of the free bag grommet and bridle, keeping the pull-up cord tight.



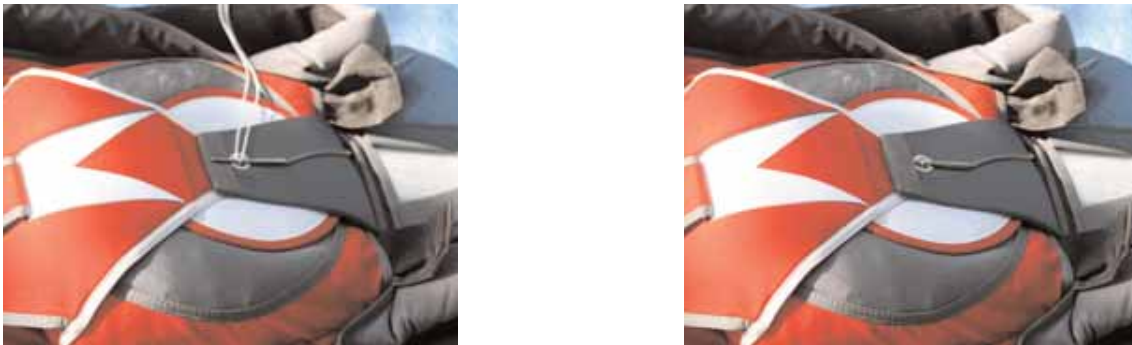
Compress the pilot chute and lock it with the temporary pin. Now pull all fabrics out from under the top plate so that the pilot chute fabric is spread out. At this point, check the length of the closing loop. If the pilot chute's top plate can rock back and forth or from side to side, the loop is too long. Shorten it so that when the pilot chute is compressed and locked with the temporary pin, the top plate is firmly seated in the nest formed by the shape of the free bag.

Fold or roll the pilot chute fabric at the top of the pilot chute parallel with the top of the container, and push this roll under the top plate of the pilot chute. Stow the remaining of the pilot chute fabric down the sides of the pilot chute top plate. Push the excess fabric under the pilot chute top plate. The pilot chute fabric excess must be thinner fold than the bottom flap and kept in the middle.

Make sure to keep the point of the fan narrow and tight to the middle bottom of the pilot chute plate. Close the bottom flap and secure it with the temporary pin.



Close the top flap and secure it with the temporary pin.



Push the side tuck flaps under the ears of the bag, remove the pull up cord and count your tools. Remember it is mandatory to seal the reserve pin to match TSO'd regulations.



With the RSL system, thread the reserve cable through the upper guide ring then through the R.S.L. ring, then through the lower guide ring.



This system doesn't replace the normal activation of the reserve handle. As any mechanical system, it might not work. Remember, you always need to make the full safety procedure, cutaway the main and activate the reserve. For the few cases where immediate reserve activation may not be desired, the Advance Seven RSL features quick-release which can be used to disconnect it. This quick release consists of a snap-shackle which is normally attached to a small ring on the inboard side of the left main riser. Release of the snap-shackle is accomplished by a quick tug on the red ribbon attached to the release ring. Some jumpers feel that the RSL should not be connected during Canopy Relative Work, preferring to disconnect from the main and then fall free of a "wrap" before deploying the reserve. Also, if winds are high, the jumper may disconnect the main canopy after landing to avoid being dragged. In this case the quick-release can be used prior to landing to prevent an non desired activation of the reserve.

Assembling the RSL system

There are two rings mounted on the reserve top flap near the end of the ripcord housing. After installing the reserve ripcord in the housing, the cable must be routed first, through the upper guide ring, then through the RSL ring, located at the end of the bridle and at last through the lower guide ring. It is important to assemble the cable with the rings in this exact order. Before the reserve container is closed, the RSL bridle must be routed out from under the reserve pin flap at the upper left. The velcro of the RSL bridle should be mated to the velcro on the left reserve riser to bring the bridle over the shoulder. Then the snap-shackle can be connected to the small ring behind the inboard side of the left main riser. There should be enough slack in the RSL bridle so that the main riser can be pulled in any direction without putting any tension on the reserve riser. Any slack in the RSL bridle near the reserve flap must be tucked under the reserve top flap. Caution although the RSL is considered to be very dependable, it is only a back-up, and should never be relied upon entirely for activation of the reserve. In the event of a breakaway or cutaway, the jumper should follow through by pulling the reserve ripcord handle as if there was no RSL. It must also be understood that this system will not operate in the event of a total non opening of the main container. Connect the RSL snap-shackle to the small ring behind the inboard side of the right main riser, your RSL system is now activated. To deactivate it, disconnect the snap-shackle.

Advance Seven main canopy setting instructions

This chapter details instructions of setting the main canopy into the main Advance Seven container system.

Assembly and packing of the main canopy must be done by a certified person or by the person making the jump, in accordance with. These persons must follow the canopy manufacturer instructions for these operations.

Basik Air Concept cannot be responsible in case of an assembly or packing or setting mistake.

1) Carefully inspect the main canopy, suspension lines, steering lines, slider and grommets, connector links and other parts of the main canopy before assembling it with the risers. Replace or repair any worn or damaged parts. Inspect the deployment bag, bridle, and pilot chute as well.

2) Attach the main canopy to the main risers, making sure that the canopy is facing the same direction as the container system. Each suspension line must be clear all the way from its attachment point through the slider grommet to the connector link without passing around any other line. Make sure the steering lines are clear from the trailing edge of the canopy through the slider grommets and through the guide rings on the rear risers to the steering toggles. Each steering toggle must be securely tied to its control line at the location specified by the canopy manufacturer.

Make sure as well that the connector links are tight enough so that they cannot be loosened with the fingers alone. If soft links are used, please report to the canopy manufacturer to install and secure them.

3) Attach the connector link of the main bridle (located inside the main bag) on the ring located at the top of the main canopy and tighten it enough.



Installation of new main toggles manufactured from 11/02/09

Run the steering line into the tape loop located under the pin setting.



Run the toggle's lower part into the steering line lower loop.
Run the entire toggle into the loop and exit it at the top end of the straight pin.



Squeeze the knot.

Beware: The knot must be only set on the tape loop located under the pin setting.

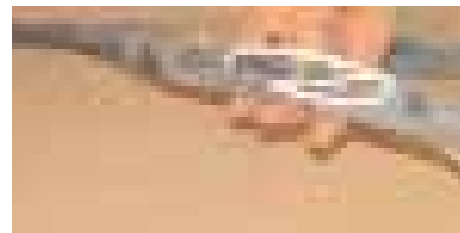


Set the deployment brakes on each side by pulling the control line down through the guide ring until the brake loop passes through it.

Insert the pin of the toggle through the loop and push it up tightly against the guide ring. Insert the pin of the toggle into its locking stow. Insert the lower part of the toggle into its locking stow too.



S-fold the slack into the channel located behind the riser.



Before setting the main canopy into its bag, you must cock the kill line of the main pilot chute (if used). At this point, refer to canopy manufacturer's guidelines for packing instruction.



IMPORTANT: The excess slack of lines must not exceed 40 cm



Lay the risers between the sides of the reserve container and the risers covers.
Close the risers covers and stow the risers straight on the side of the reserve container.



Before setting the main bag into the container be sure to have cock the kill line system of your main pilot chute (if used). The colored mark must be visible in the window. If not re-cock the system.



On the left picture the pilot chute is ready. On the right shot the kill line system is not cocked.



Set the main bag into the container with the line stows oriented toward the bottom. This position is important; if the line are oriented toward the top, it may be more difficult for the pilot chute to extract the bag. Also, the lines can snag easily any part of the container.



Pilot chute bridle must be route out toward the upper right side. Closing flap order is:
-Bottom -Up -Left -Right



Secure with the pin located on the pilot chute bridle. Bridle must be laid vertically as shown on the middle above shot. Close the main protecting flap and stowed the remaining bridle under the right main flap toward the corner and the pilot chute pouch.



Lay the pilot chute out flat with mesh side up and fold it in half over the bridle. Now fold the curved side up to the top and stow 3 folds of the bridle in the middle.



Fold one side of the pilot chute over the opposite side, and then roll it tightly until having cylindrical shape.



Keep tight the pilot chute when stowing it into the pouch.



Tuck the slack of bridle into the pouch, then tuck the pilot chute. Spread widely the pilot chute into the pouch.



Set the FF pad into its place. The tuck tab with magnets goes into the pouch the opposite part must be set in the container's corner. Avoid to twist the pouch's mouth where the magnets are installed.

Closing the Advance Seven container with a pull-out opening system

FIRST COCK THE KILL LINE OF THE PILOT CHUTE

- 1) Mate the magnet from pull-out pad with the magnet located under the pull-out pad cover at the right hand corner of bottom flap.
- 2) Stow the bridle in folds 15 to 20 cm long, and lay the folded bridle across the upper part of the bag. Be sure not to tuck these folds down between the bag and the bottom of the reserve container. Doing so may delay the action of pilot chute.
- 3) Loosely fold the pilot chute and lay it across the bag.
- 4) Close the flaps as follow, bottom-top-left-right, securing the closing loop with the pin.
- 5) Tuck the slack under the right side flap.
- 7) Close the protecting flap.

Be sure that the connecting knot between the pilot chute and the bridle is not trap under the flap.

RSL system and handles

Connect the snap shackle on the dedicated ring located on the left main riser. Your RSL is now activated. To disconnect it, just pull the tab and remove the shackle from the ring.



Hooktable and pillow breakaway handles. Reserve handle



ADDITIVE TO ADVANCE HARNESS-CONTAINER USER MANUALS MANUFACTURED BY BASIK AIR CONCEPT

After long researchs and many testings, we have developed a new type of cutaway housing terminal end. Because of its new design we have decided to make this additive of the user manual to protect you against misrouting. Its goal is to show you the right way to install the breakaway release system with this new terminal end.

You will find in the following pages, all assembly stages but also a demonstration in last page of the mistake to be avoid.

This new design will bring you all satisfaction because of its simplicity of use and also because it increases the security which characterized this new system.



Basik Air Concept- 2010 RN 97 - 83340 Le Luc - France
Tel: 33-(0) 4 94 99 12 36 - Fax: 33-(0) 4 94 39 89 37 - E-mail: basik.fr@free.fr

As you can see the old grommet has been replaced by a cylindrical shape inox piece equipped with several windows. Advantages of this sytem are:

Same shape as the breakaway housing

Complete protection of the white loop

No more side setup of the terminal end

No more cable sucking possibility

This terminal end has 4 windows.

1, in which the cable run through, 2 little rounds in which the white loop goes and 1 long oval which allow to install the cable and to check the routing.



View of the cable running into the housing and the terminal end.



Routing of the white loop through the riser's grommet.

Running of the white loop through one of the little round window.



Fit the cable through the white loop and stow the remaining cable. Assembly must be done like on this photo.

Final setting of the breakaway housing on the 3 ring release system.



Routing mistake.

Beware to not run the white loop by or through the large oval window. If you do so, a non intentionnal cutaway will happened. Check carefully that the white loop routing goes exclusively by both little round windows.



The above photo shows the routing mistake to be avoided.

Basik Air Concept, wish you good jumps with this new system.

Assembly of the 3-rings system

- 1) Thread the cable into its housing and stick the handle to the harness. The handle should be positioned as close to the ends of the housings as possible so that no cable is exposed.
- 2) With the rings of the riser facing toward the floor, pass the ring on the end of the riser through the large harness ring from above. Fold it back toward the canopy and riser.
- 3) Thread the smallest ring through the middle ring in the same way, but make sure it does not pass through the large ring.
- 4) Thread the white loop through the small ring only and then through the riser grommet so it pokes out at the back of the riser.
- 5) Thread the white loop through the grommet on the end of the cable housing. The flat side of the cable housing grommet should lay against the riser.
- 6) Thread the yellow cable through the white loop, making sure the loop is not twisted. Make sure you do not bend the cable too sharply or kink it. Insert the free end in the channel on the back of the riser.
- 7) Repeat the above steps with the other riser.

Before jumping the Advance Seven container system

Before using the Advance Seven container system, you must read this guide and proceed to the following checks. These checks must be done at least once a month or after 50 jumps. The maintenance (if needed) must be done by a qualified person (up to the country of use regulations).

Velcros, spandex pouch and reserve elastic bands closing system

Main and reserve closing loops

Harness, all webbings, chest strap and leg straps

Stiches of the container and harness

Routing of handles, cables and bridles

Housings and cables

Main pilot chute and bridle

3-rings system

Main risers

All hardwares

Grommets

Main deployment bag

RSL system if installed on your rig

Components life time

Harness container 20 years

Reserve spring pilot chute must be replaced if the spring force is less than 14 kg and if any wear appear on the fabric.

Reserve bag same as container

Main pilot chute must be change every 350 jumps

Inner Kill line must be change every 200 jumps

The complete system must be check at least every year and worn components must be changed if necessary.

Rigging and maintenance

They are set in 2 categories:

1) Class 1 repair

Everything can be done by a certified rigger except the following:

Harness - reserve container and all parts identified as a "Part Number" and listed into the capability list (reserve bag - reserve pilot chute - reserve ripcord).

2) Class 2 repair

All work on the harness and reserve container must be done by the manufacturer or a Master Rigger. No one else is allowed to proceed to this kind of repair. Only raw material allowed by BasiK Air Concept must be used.

Only the spare parts with a BasiK Air Concept "Part Number" and listed on BasiK Air Concept capability list are allowed to be used with the Advance Seven System.

Container cleaning

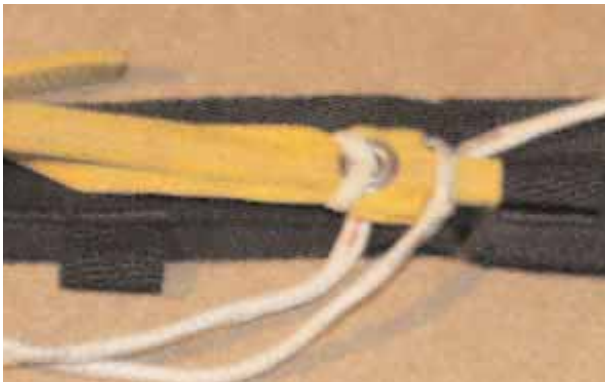
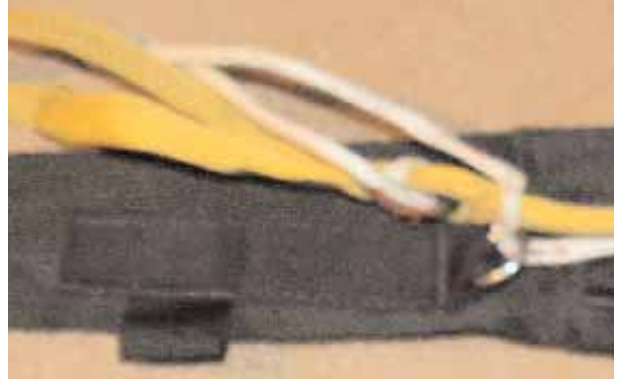
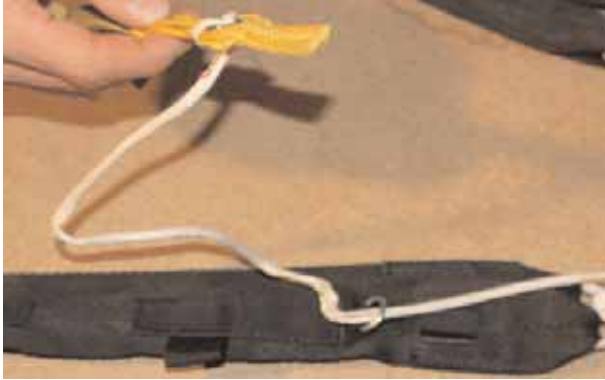
Use a textile spray for any natural or chemical stain. If a washing must be made, put the H/C into a textile bag with natural light soap and used cold water. The drying must be done under shade and at least for 15 days to eliminate the water from the inside foam.

NEVER USED CHEMICAL PRODUCT OR DETERGENT AND NEVER PROCEED TO A DRY WASHING.



Additional for the Seven Student version

The Seven's main toggles are pin free. Set the deployment brakes on each side by pulling the control line down through the guide ring until the brake loop passes through it. Insert the stiffened upper portion of the toggle through the loop and pull it up tightly against the guide ring. S-fold the slack between the toggle and the brake-set, and stow it in the tape loop.



The main lift web of the Seven Student has a color coding system which allow a perfect symmetry of the harness. Adjust the same color on each side and stow the remaining webbing into the flaps.



AFF secondary handle

The AFF secondary handle can have a secondary pilot chute which allow to open directly the main container.



Start by threading the yellow cable into the lower left tape loop. Then thread it into the pouch tape loop and alternate each one till the end.



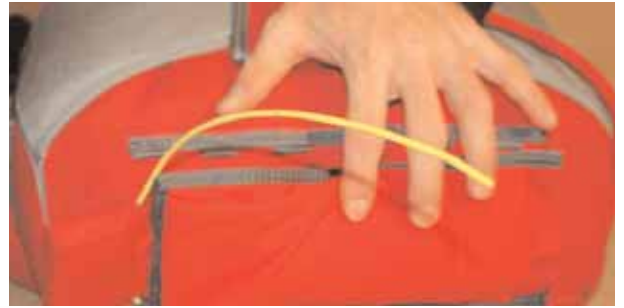
Pack the pilot chute as usual.



Put the pilot chute against the container with the bridle slack between the pilot chute and the pouch.



Stow the system correctly and set the upper yellow cable the same maner as over. Start by the container tape loop first.



Close the pouch and install the handle.

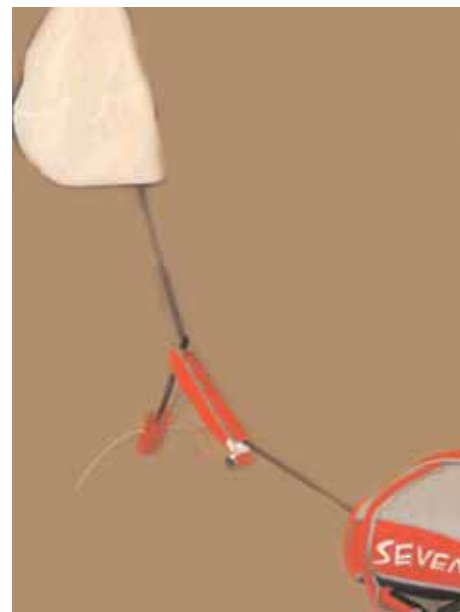


How the system works?

When pulling the handle both cables released and the pouch became free.



Do not hold the handle, just throw it away. The secondary pilot chute inflates immediately like a pull-out system and pull the pouch. When in tension the main pilot chute get out from the pouch and open the main container.



IF YOU DO NOT WANT TO USED THE SECONDARY PILOT CHUTE, JUST REMOVE IT FROM THE SYSTEM. THIS WILL ALLOW YOU TO OPEN THE POUCH ONLY AND YOU WILL HAVE TO EXTRACT THE PILOT CHUTE TO HAVE THE CONTAINER OPEN.

How to assemble the sleeve

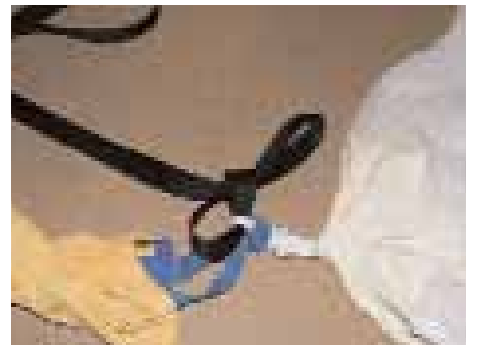
View of the sleeve



Thread the sleeve loop end through the main canopy bridle.



Then thread the entire sleeve through the sleeve loop end. Thread the main pilot chute bridle



into the main canopy bridle and route the opposite loop end through it.

Squeeze the knot to have these 3 bridle attached together.

Reverse the sleeve and run the main pilot chute bridle through the pilot chute bottom tapes.

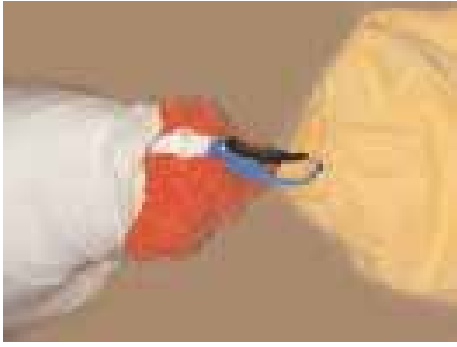


Then thread the pilot chute cap through the bridle loop end.

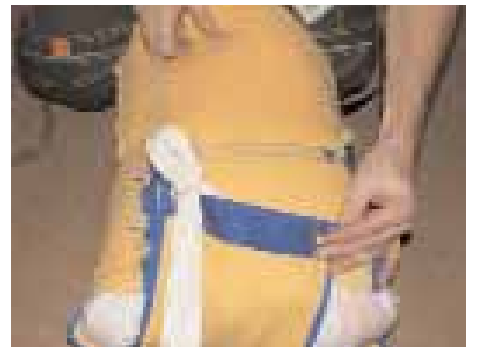
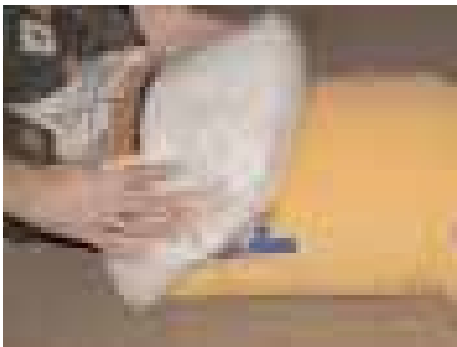
Squeeze the knot.



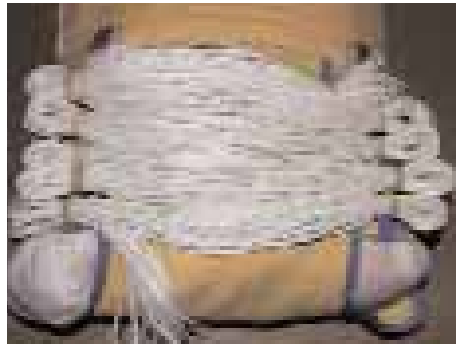
Put the canopy into the sleeve by spreading it all the way.



Fold the remaining of the canopy and insert it into the sleeve.



Flod up the closing flap with the lines right in the center and close it with the 2 line stows. Finish the line stowage and close the protecting flap.



Put the sleeve in the container, fold it and close the container. If you are using a spring pilot chute, set it right in the middle of the tray over the sleeve and close the container.

