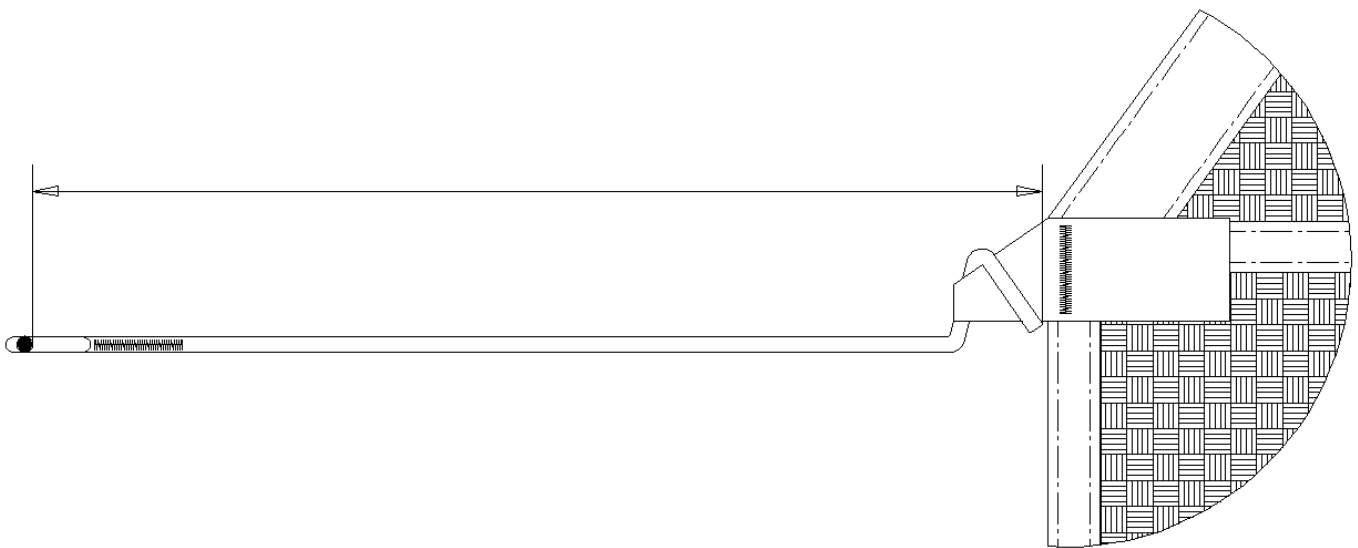


## Peak line trim

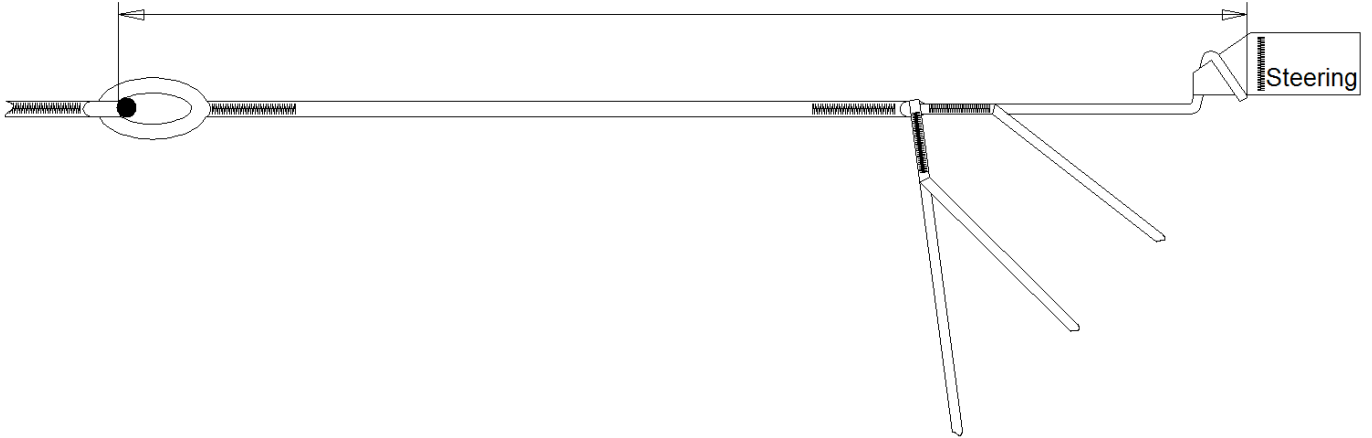
### Measuring and Trimming Vectran Lines On a Atair Canopy

- 1) Remove the lines from connector links and stick them on the peg.  
Pull each line to 90N ( 20lbs).
- 2) Measure the A, B, C and D lines from the outboard line top of the loop  
( riser side ) to the top of loop ( canopy side ).

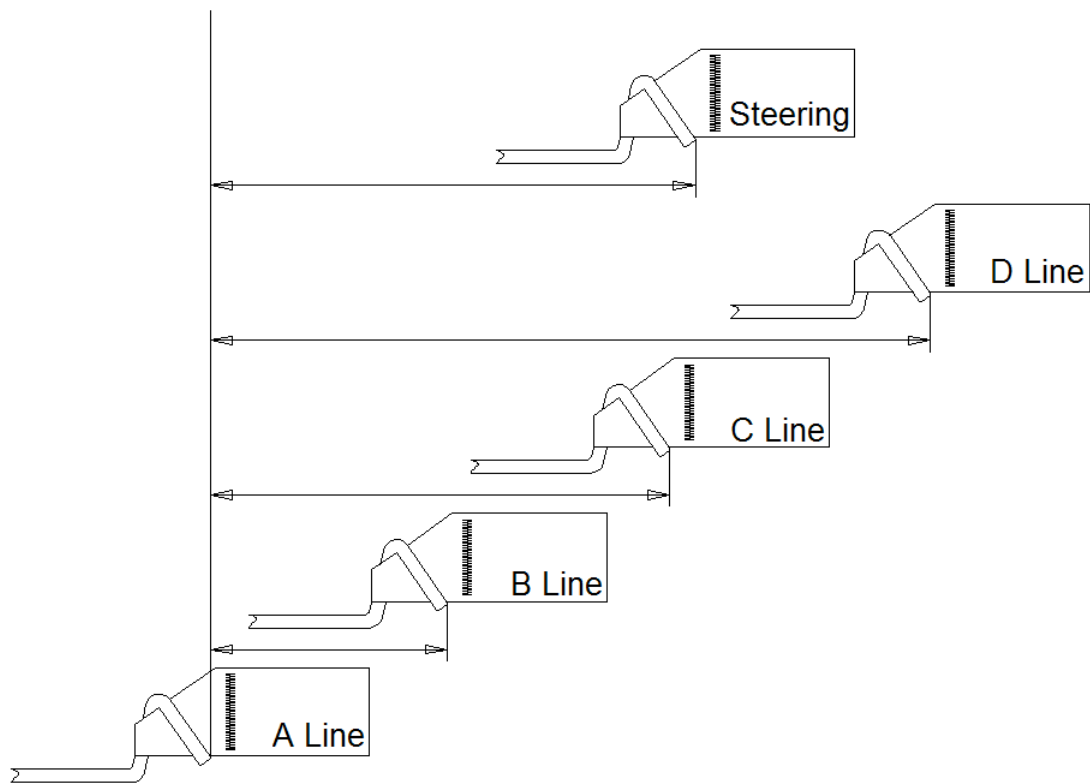


3) Measure the steering lines ( SL ) from the shallow brake setting loop to the top of the Upper Steering Line.

While measuring pull each line to 90N ( 20lbs).



4) Trim B, C, D and Brake Lines according to Peak Line Trim Chart



<b>Peak 185</b>	A = 305,5cm	B = A + 6,5	C = A + 24,5	D = A + 51,5	SL = A + 48,5	BK-TOG= 36cm
<b>Peak 205</b>	A = 323,5cm	B = A + 7	C = A + 26	D = A + 54	SL = A + 50,5	BK-TOG= 36cm
<b>Peak 225</b>	A = 350cm	B = A + 7	C = A + 26,5	D = A + 56,5	SL = A + 52	BK-TOG= 41cm
<b>Peak 245</b>	A = 365cm	B = A + 7,5	C = A + 28,5	D = A + 59,5	SL = A + 54	BK-TOG= 46cm
<b>Peak 265</b>	A = 377cm	B = A + 8	C = A + 29,5	D = A + 61,5	SL = A + 56	BK-TOG= 51cm
<b>Peak 285</b>	A = 395cm	B = A + 8	C = A + 30,5	D = A + 64	SL = A + 57	BK-TOG= 54cm

Stabilizers slack is : B = 1cm, C = 2cm and D = 3cm.

**Measurements are in Centimeters!**