

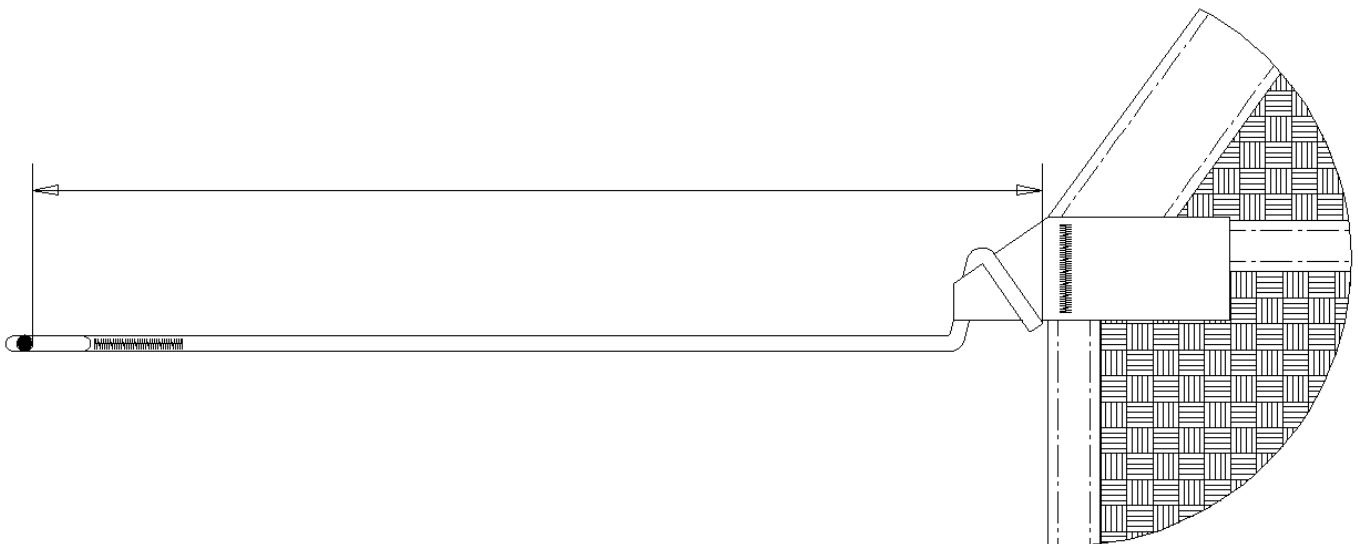


Vision line trim

Measuring and Trimming Dacron Lines

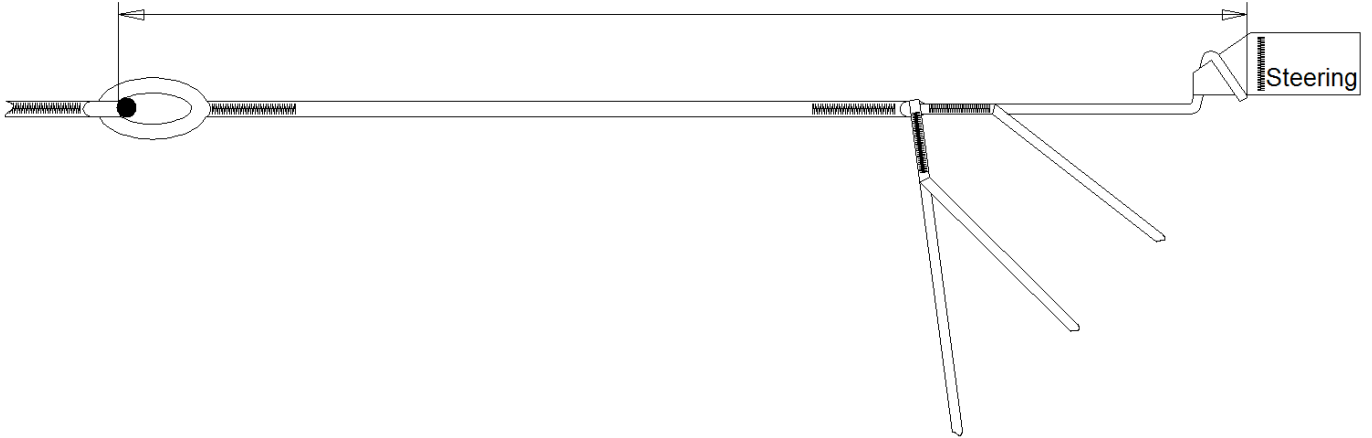
On a Atair Canopy

- 1) Remove the lines from connector links and stick them on the peg.
Pull each line to 70N (15lbs).
- 2) Measure the A, B, C and D lines from the outboard line top of the loop (riser side) to the top of loop (canopy side).

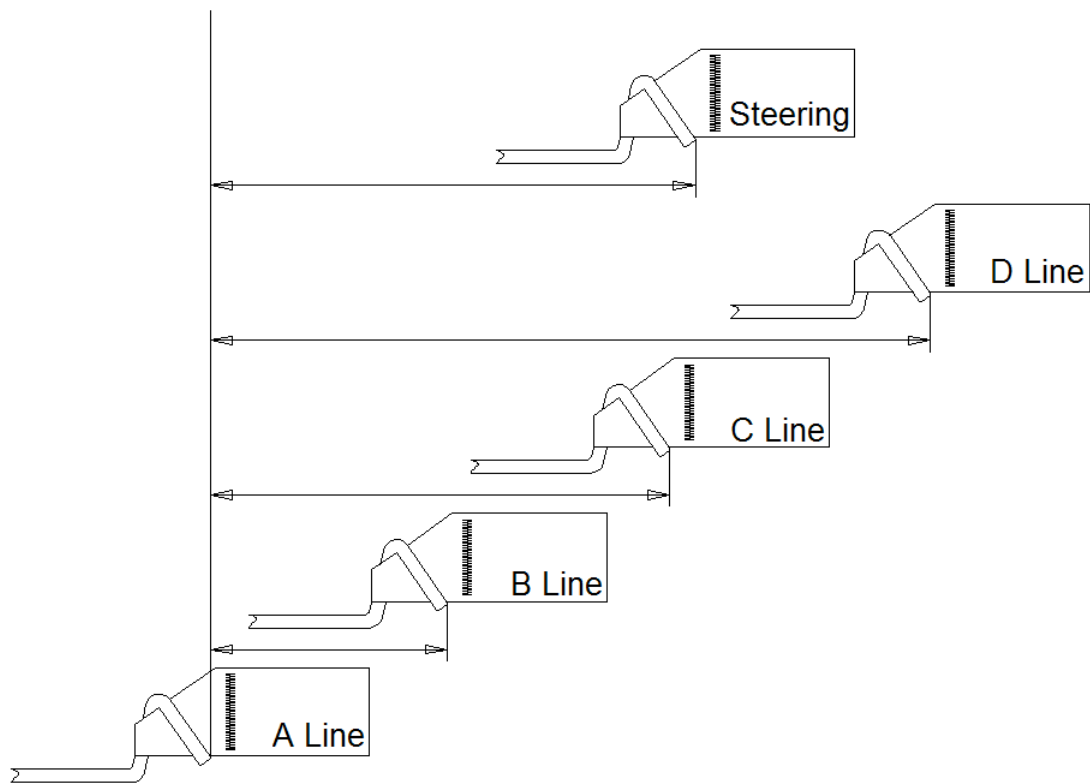


3) Measure the steering lines (SL) from the shallow brake setting loop to the top of the Upper Steering Line.

While measuring pull each line to 70N (15lbs).



4) Trim B, C, D and Brake Lines according to Vision Line Trim



Vision 185	A = 292,5cm	B = A + 4	C = A + 20	D = A + 45,5	SL = A + 37,5	BK-TOG= 52
Vision 205	A = 310cm	B = A + 4	C = A + 21	D = A + 48	SL = A + 40	BK-TOG= 53
Vision 225	A = 331,5cm	B = A + 4,5	C = A + 22,5	D = A + 51	SL = A + 41,5	BK-TOG= 57
Vision 235	A = 338,5cm	B = A + 4,5	C = A + 22,5	D = A + 51,5	SL = A + 41,5	BK-TOG= 59
Vision 245	A = 347,5cm	B = A + 4,5	C = A + 23,5	D = A + 53,5	SL = A + 43,5	BK-TOG= 60
Vision 255	A = 355cm	B = A + 4,5	C = A + 24	D = A + 54	SL = A + 44	BK-TOG= 60
Vision 265	A = 359cm	B = A + 5	C = A + 24,5	D = A + 55,5	SL = A + 45	BK-TOG= 62
Vision 285	A = 374cm	B = A + 5	C = A + 25,5	D = A + 57,5	SL = A + 46	BK-TOG= 66
Vision 305	A = 391cm	B = A + 5	C = A + 26	D = A + 59	SL = A + 48	BK-TOG= 66

Main stabilizers slack is : B = 1cm, C = 2cm and D = 3cm.

Mini stabilizers slack is 1cm on B, C and D.

Measurements are in Centimeters!