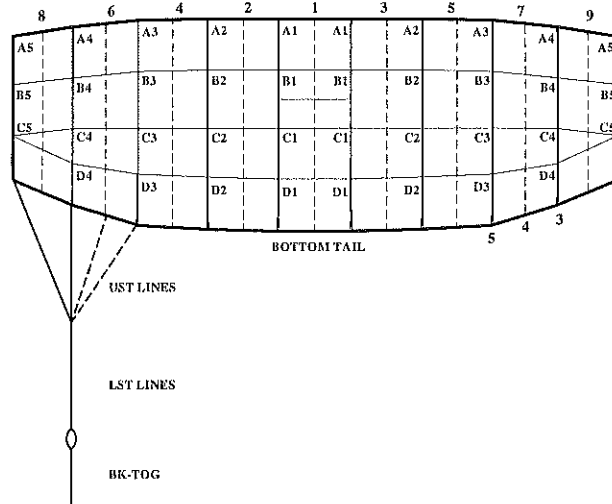




Performance Designs, Inc
 1300 E Int'l Speedway Blvd
 DeLand FL 32724
 Telephone: 386-738-2224
 Fax: 386-734-8297

LINE TRIM CHART
 FOR

KATANA 083 - 170



	Measurement In Inches								Measurement in Centimeters							
	KA-083	KA-089	KA-097	KA-107	KA-120	KA-135	KA-150	KA-170	KA-083	KA-089	KA-097	KA-107	KA-120	KA-135	KA-150	KA-170
A1	96 1/2	99 5/8	103 1/2	108 1/4	114 1/8	120 1/8	126 1/8	133 3/4	245.1	253.0	262.9	275.0	289.9	305.2	320.5	339.6
A1-B1	2 1/8	2 1/4	2 1/4	2 3/8	2 1/2	3 3/8	3 1/2	3 3/4	5.4	5.7	5.7	6.0	6.4	8.5	8.9	9.5
A1-C1	7 5/8	7 7/8	8 1/4	8 5/8	9 1/4	10 1/8	10 5/8	11 3/8	19.4	20.0	21.0	21.9	23.5	25.6	27.0	28.8
A1-D1	14 1/8	14 5/8	15 3/8	16 1/8	17 1/8	18 1/2	19 5/8	20 7/8	35.9	37.1	39.1	41.0	43.5	47.1	49.8	53.1
A2	96 1/2	99 1/2	103 1/2	108 1/4	114 1/8	120 1/8	126 1/4	133 3/4	245.1	252.7	262.9	275.0	289.9	305.3	320.5	339.7
A2-B2	2	2 1/8	2 1/4	2 1/4	2 3/8	3 1/4	3 3/8	3 5/8	5.1	5.4	5.7	5.7	6.0	8.1	8.6	9.1
A2-C2	7 5/8	7 7/8	8 1/4	8 5/8	9 1/8	10	10 5/8	11 1/4	19.4	20.0	21.0	21.9	23.2	25.5	26.9	28.7
A2-D2	13 3/4	14 1/4	14 7/8	15 5/8	16 5/8	18	19	20 1/4	34.9	36.2	37.8	39.7	42.2	45.7	48.3	51.6
A3	96 3/8	99 1/2	103 1/2	108 1/4	114 1/8	120 1/4	126 3/8	134	244.8	252.7	262.9	275.0	289.9	305.6	320.9	340.3
A3-B3	2 1/8	2 1/4	2 1/4	2 3/8	2 1/2	3 1/8	3 1/4	3 1/2	5.4	5.7	5.7	6.0	6.4	7.9	8.3	8.8
A3-C3	7 3/8	7 5/8	8	8 3/8	8 7/8	9 5/8	10 1/4	10 7/8	18.7	19.4	20.3	21.3	22.5	24.5	25.9	27.6
A3-D3	13 1/4	13 3/4	14 3/8	15 1/8	16 1/8	17 1/2	18 1/4	19 1/2	33.7	34.9	36.5	38.4	41.0	44.0	46.5	49.6
A4	96 3/8	99 1/2	103 1/2	108 1/4	114 1/4	120 5/8	126 5/8	134 3/8	244.8	252.7	262.9	275.0	290.2	306.3	321.8	341.3
A4-B4	2 3/8	2 3/8	2 1/2	2 5/8	2 3/4	3 1/8	3 3/8	3 1/2	6.0	6.0	6.4	6.7	7.0	8.1	8.5	9.0
A4-C4	6 3/4	7	7 3/8	7 3/4	7 5/8	8 7/8	9 3/8	10	17.1	17.8	18.7	19.7	19.4	22.5	23.8	25.3
A4-D4	11 1/8	11 1/2	12	12 5/8	12 3/4	14 3/8	15 1/4	16 1/4	28.3	29.2	30.5	32.1	32.4	36.6	38.7	41.3
A5	96 3/8	99 5/8	103 5/8	108 1/2	114 1/2	120 7/8	127 1/8	134 7/8	244.8	253.0	263.2	275.6	290.8	307.1	322.8	342.5
A5-B5	2 1/2	2 1/2	2 5/8	2 3/4	3	3 3/8	3 1/2	3 3/4	6.4	6.4	6.7	7.0	7.6	8.4	8.9	9.4
A5-C5	6 3/4	7	7 1/4	7 5/8	8 1/8	8 3/4	9 1/4	9 7/8	17.1	17.8	18.4	19.4	20.6	22.3	23.5	25.1
LST	68 3/4	71	74	78	82 3/8	80 5/8	81 3/4	85 7/8	174.6	180.3	188.0	198.1	209.2	204.7	207.7	218.1
A5-UST1	9 1/4	9 3/4	10 1/4	11 3/8	12 1/4	6 5/8	4 3/8	7 7/8	23.5	24.8	26.0	28.9	31.1	16.7	11.1	20.1
A5-UST3	8 1/8	8 5/8	9 1/8	10 1/8	10 7/8	9	6 7/8	7 5/8	20.6	21.9	23.2	25.7	27.6	22.8	17.4	19.5
A5-UST4	8 7/8	9 3/8	9 7/8	11	11 3/4	11 5/8	9 5/8	9	22.5	23.8	25.1	27.9	29.8	29.4	24.3	22.9
A5-UST5	10 3/8	10 3/4	11 3/8	12 1/2	13 3/8	16 1/8	14 1/4	12 5/8	26.4	27.3	28.9	31.8	34.0	40.8	36.3	32.2
B STAB SLK	1/2	1/2	1/2	1/2	1/2	1/2	1/2	1/2	1.3	1.3	1.3	1.3	1.3	1.3	1.3	1.3
C STAB SLK	1	1	1	1	1	1	1	1	2.5	2.5	2.5	2.5	2.5	2.5	2.5	2.5
BK-TOG*	14 3/4	15 1/4	15 7/8	14 5/8	15 1/2	17 5/8	19	20 1/2	37.5	38.7	40.3	37.1	39.4	44.7	48.1	52.1
Channel Slider	20" Chord	20" Chord	20" Chord	20" Chord	20" Chord	N/A	N/A	N/A	50.8 Chord	50.8 Chord	50.8 Chord	50.8 Chord	50.8 Chord	N/A	N/A	N/A
	31" Span	31" Span	31" Span	31" Span	31" Span	N/A	N/A	N/A	78.7 Span	78.7 Span	78.7 Span	78.7 Span	78.7 Span	N/A	N/A	N/A
Dome Channel w/Mesh	N/A	N/A	N/A	N/A	N/A	23" Chord	23" Chord	23" Chord	N/A	N/A	N/A	N/A	N/A	58.4 Chord	58.4 Chord	58.4 Chord
	N/A	N/A	N/A	N/A	N/A	42" Span	42" Span	42" Span	N/A	N/A	N/A	N/A	N/A	106.7 Span	106.7 Span	106.7 Span

*Due to development methodology, the finished BK-TOG dimensions may not scale

*Refer to document MAN-018 or MAN-019 for measuring sliders