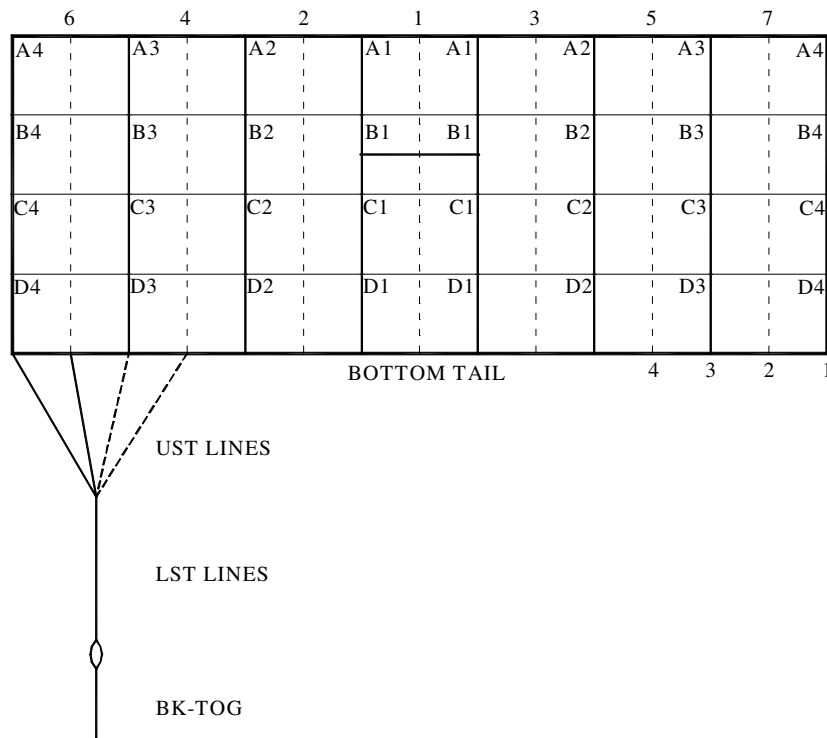




Performance Designs, Inc.
 1300 E. Int'l Speedway Blvd
 DeLand FL 32724
 Telephone: 386-738-2224
 Fax: 386-734-8297

LINE TRIM CHART
FOR
PR 106 - 143



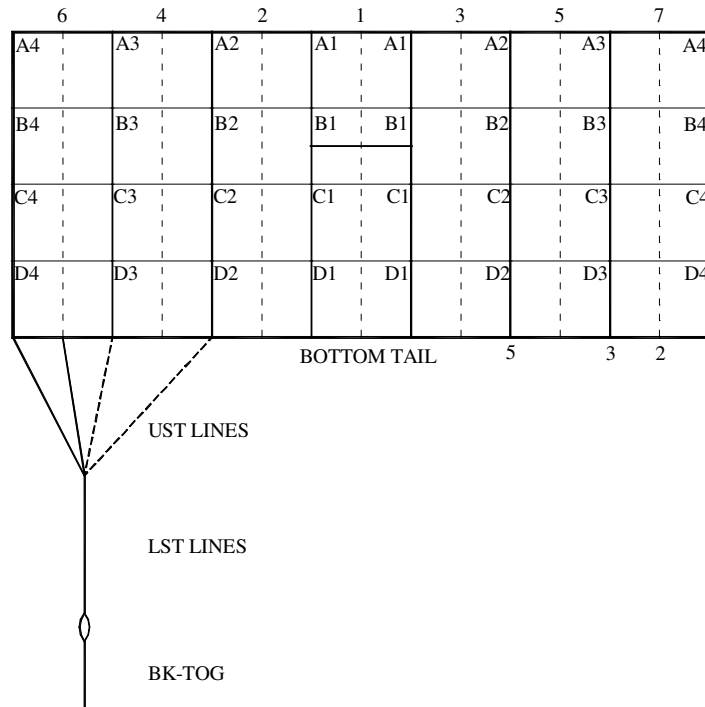
	PR-106	PR-113	PR-126	PR-143
A1	96	99 3/8	103 5/8	111 1/2
A1-B1	2 1/2	2 1/2	2 5/8	2 7/8
A1-C1	9 1/8	9 1/2	9 3/4	10 5/8
A1-D1	16 3/8	17	17 7/8	19
A2	96	99 3/8	103 5/8	111 1/2
A2-B2	2 1/2	2 1/2	2 5/8	2 7/8
A2-C2	9 1/8	9 1/2	9 3/4	10 5/8
A2-D2	16 3/8	17	17 7/8	19
A3	96	99 3/8	103 5/8	111 1/2
A3-B3	2 1/2	2 1/2	2 5/8	2 7/8
A3-C3	9 1/8	9 1/2	9 3/4	10 5/8
A3-D3	16 3/8	17	17 7/8	19
A4	96	99 3/8	103 5/8	111 1/2
A4-B4	2 1/2	2 1/2	2 5/8	2 7/8
A4-C4	9 1/8	9 1/2	9 3/4	10 5/8
A4-D4	16 3/8	17	17 7/8	19
LST	77 1/2	79 7/8	83 7/8	88 7/8
A4-UST1	12 1/8	12	13	11 3/4
A4-UST2	12 1/8	12	13	11 3/4
A4-UST3	12 1/8	12	13	11 3/4
A4-UST4	12 1/8	12	13	11 3/4
B STAB SLK	1/2	1/2	1/2	1/2
C STAB SLK	1	1	1	1
D STAB SLK	EVEN W/C	EVEN W/C	EVEN W/C	EVEN W/C
BK-TOG	16 1/2	16 1/2	18	18 1/2



Performance Designs, Inc
 1300 E Int'l Speedway Blvd
 DeLand FL 32724
 Telephone: 386-738-2224
 Fax: 386-734-8297

LINE TRIM CHART FOR

PR 160 - 281



	PR-160	PR-176	PR1-193	PR-218	PR-235	PR-253	PR-281
A1	117 7/8	123 7/8	129 5/8	137 7/8	143	148	156 3/8
A1-B1	3	3 1/4	3 3/8	3 1/2	3 3/4	3 7/8	3 1/8
A1-C1	11 1/4	11 3/4	12 3/8	13 1/8	13 5/8	14 1/8	14 7/8
A1-D1	20 1/8	21 1/8	22 1/4	23 1/2	24 3/8	25 1/4	26 5/8
A2	117 7/8	123 7/8	129 5/8	137 7/8	143	148	156 3/8
A2-B2	3	3 1/4	3 3/8	3 1/2	3 3/4	3 7/8	3 1/8
A2-C2	11 1/4	11 3/4	12 3/8	13 1/8	13 5/8	14 1/8	14 7/8
A2-D2	20 1/8	21 1/8	22 1/4	23 1/2	24 3/8	25 1/4	26 5/8
A3	117 7/8	123 7/8	129 5/8	137 7/8	143	148	156 3/8
A3-B3	3	3 1/4	3 3/8	3 1/2	3 3/4	3 7/8	3 1/8
A3-C3	11 1/4	11 3/4	12 3/8	13 1/8	13 5/8	14 1/8	14 7/8
A3-D3	20 1/8	21 1/8	22 1/4	23 1/2	24 3/8	25 1/4	26 5/8
A4	117 7/8	123 7/8	129 5/8	137 7/8	143	148	156 3/8
A4-B4	3	3 1/4	3 3/8	3 1/2	3 3/4	3 7/8	3 1/8
A4-C4	11 1/4	11 3/4	12 3/8	13 1/8	13 5/8	14 1/8	14 7/8
A4-D4	20 1/8	21 1/8	22 1/4	23 1/2	24 3/8	25 1/4	26 5/8
LST	93 5/8	98 1/8	102 1/2	108 1/2	112 3/8	116 1/8	122 1/4
A4-UST1	12 1/2	13 7/8	14 3/8	15	15 3/8	15 3/4	16 1/2
A4-UST2	12 1/2	13 7/8	14 3/8	15	15 3/8	15 3/4	16 1/2
A4-UST3	12 1/2	13 7/8	14 3/8	15	15 3/8	15 3/4	16 1/2
A4-UST5	12 1/2	13 7/8	14 3/8	15	15 3/8	15 3/4	16 1/2
B STAB SLK	1/2	1/2	1/2	1/2	1/2	1/2	1
C STAB SLK	1	1	1	1	1	1	1 1/2
D STAB SLK	EVEN W/C	EVEN W/C	EVEN W/C	EVEN W/C	EVEN W/C	EVEN W/C	EVEN W/C
BK-TOG	19 1/2	20 1/2	21 1/2	22 3/4	23 1/2	24 1/2	26 1/4