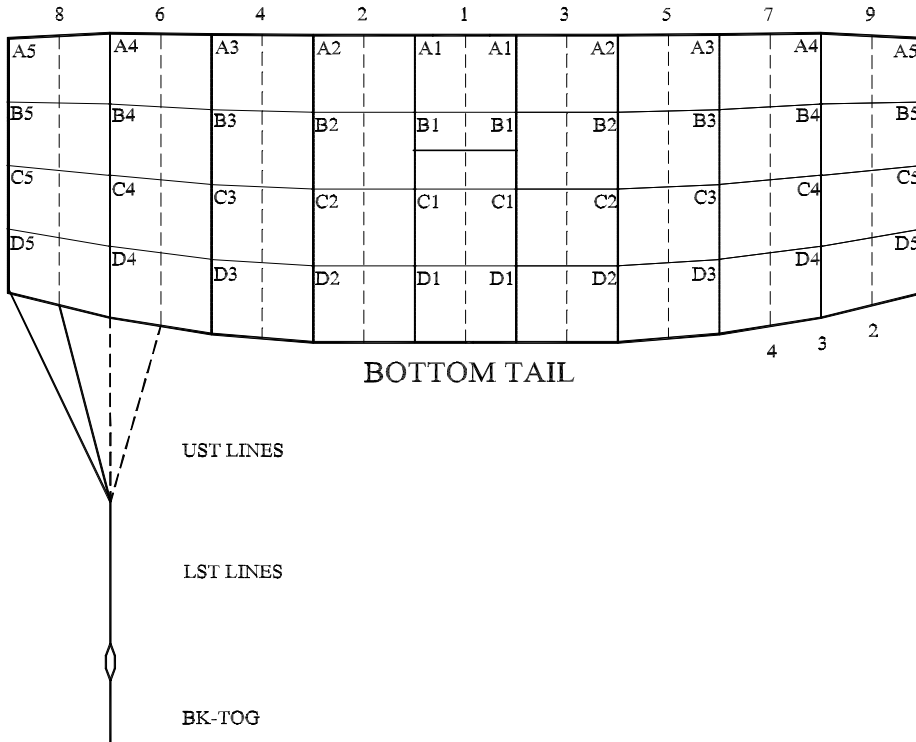




Performance Designs, Inc.
 1300 E. Int'l Speedway Blvd
 DeLand FL 32724
 Telephone: 386-734-2224
 Fax: 386-734-8297

LINE TRIM CHART FOR SILHOUETTE 135 - 170

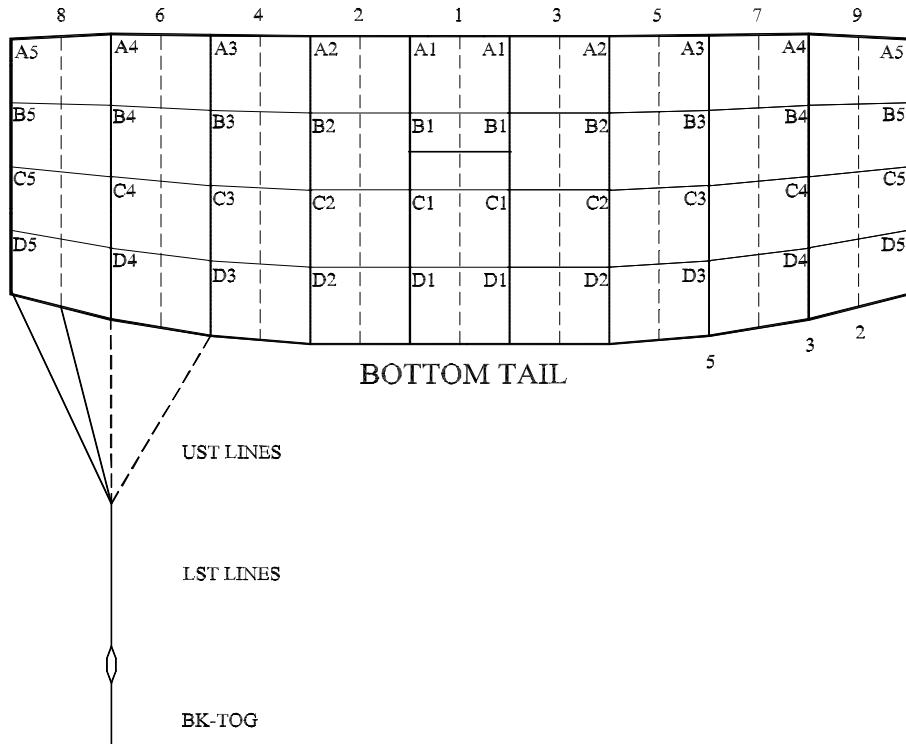


	SI-135	SI-150	SI-170
A1	122 7/8	129 1/2	137 7/8
A1-B1	2 1/4	2 1/2	2 5/8
A1-C1	8 3/8	8 7/8	9 1/2
A1-D1	16 1/4	17 1/4	18 1/2
A2	122 7/8	129 1/2	137 7/8
A2-B2	2 1/4	2 1/2	2 5/8
A2-C2	8 1/4	8 3/4	9 3/8
A2-D2	16 1/4	17 1/4	18 1/2
A3	122 7/8	129 1/2	137 7/8
A3-B3	2 1/4	2 3/8	2 5/8
A3-C3	8	8 1/2	9 1/4
A3-D3	15 3/4	16 3/4	17 7/8
A4	122 3/4	129 3/8	137 3/4
A4-B4	2 1/8	2 1/4	2 3/8
A4-C4	7 1/4	7 3/4	8 1/4
A4-D4	14 1/2	15 3/8	16 1/2
A5	122 5/8	129 1/4	137 5/8
A5-B5	2	2 1/8	2 3/8
A5-C5	6 3/8	6 3/4	7 1/4
A5-D5	12 5/8	13 1/2	14 1/2
LST	91 1/8	96 1/8	102 3/8
A5-UST1	14 1/4	14 3/8	16 1/4
A5-UST2	12 1/4	12 3/8	13 3/4
A5-UST3	10 3/4	11 3/8	12 1/4
A5-UST4	10 3/4	11 3/8	12 1/4
B STAB SLK	1/2	1/2	1/2
C STAB SLK	1	1	1
D STAB SLK	1 1/2	1 1/2	1 1/2
BK-TOG	16 5/8	17 3/8	18 5/8



Performance Designs, Inc.
 1300 E. Int'l Speedway Blvd
 DeLand FL 32724
 Telephone: 386-734-2224
 Fax: 386-734-8297

LINE TRIM CHART FOR SILHOUETTE 190 - 260



	SI-190	SI-210	SI-230	SI-260
A1	145 3/4	153 1/4	160 3/8	165 3/8
A1-B1	2 3/4	2 7/8	2 7/8	3 1/8
A1-C1	9 7/8	10 3/8	10 3/4	11 1/2
A1-D1	19 3/8	20 1/2	21 1/4	22 5/8
A2	145 3/4	153 1/4	160 3/8	165 3/8
A2-B2	2 3/4	2 7/8	2 7/8	3 1/8
A2-C2	9 3/4	10 3/8	10 5/8	11 3/8
A2-D2	19 3/8	20 3/8	21 1/8	22 5/8
A3	145 3/4	153 1/4	160 3/8	165 3/8
A3-B3	2 5/8	2 3/4	2 3/4	3
A3-C3	9 1/2	10	10 1/4	11
A3-D3	18 3/4	19 7/8	20 1/2	22
A4	145 5/8	153 1/8	160 1/4	165 1/4
A4-B4	2 3/8	2 5/8	2 1/2	2 3/4
A4-C4	8 5/8	9 1/8	9 3/8	10 1/8
A4-D4	17 3/8	18 3/8	19	20 1/4
A5	145 1/2	153	160 1/8	165 1/8
A5-B5	2 3/8	2 1/2	2 1/2	2 3/4
A5-C5	7 5/8	8	8 1/4	8 7/8
A5-D5	15 1/8	16	16 5/8	17 3/4
LST	107 5/8	112 1/4	117 3/4	120 1/8
A5-UST1	12 3/8	12 3/4	13 1/8	15 1/8
A5-UST2	12 3/8	12 3/4	13 1/8	15 1/8
A5-UST3	12 3/8	12 3/4	13 1/8	15 1/8
A5-UST5	12 3/8	12 3/4	13 1/8	15 1/8
B STAB SLK	1/2	1/2	1/2	1/2
C STAB SLK	1	1	1	1
D STAB SLK	1 1/2	1 1/2	1 1/2	1 1/2
BK-TOG	19	19 3/4	21 1/2	20 5/8