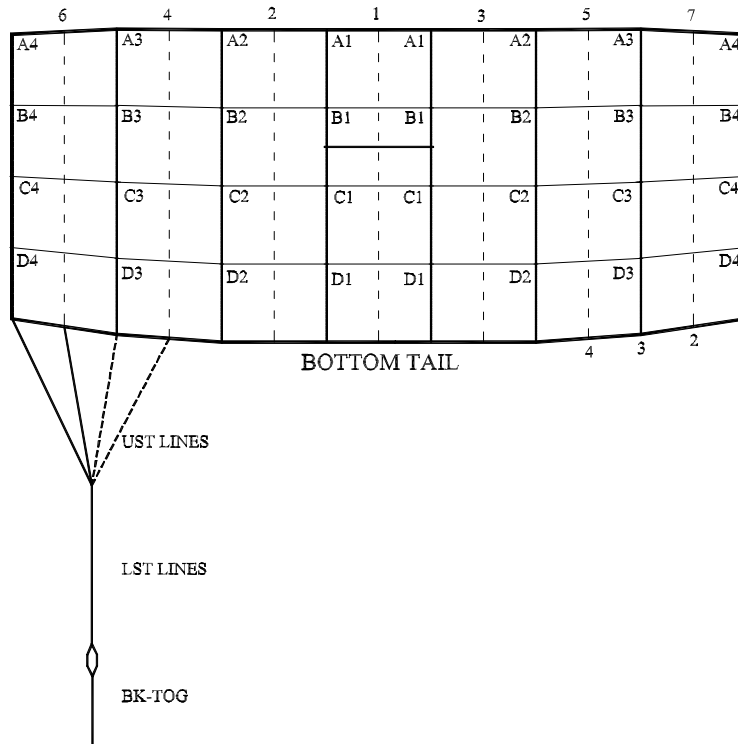




Performance Designs, Inc.  
 1300 E Int'l Speedway Blvd  
 DeLand FL 32724  
 Telephone: 386-734-2224  
 Fax: 386-734-8297

## LINE TRIM CHART FOR SPECTRE 097 - 135

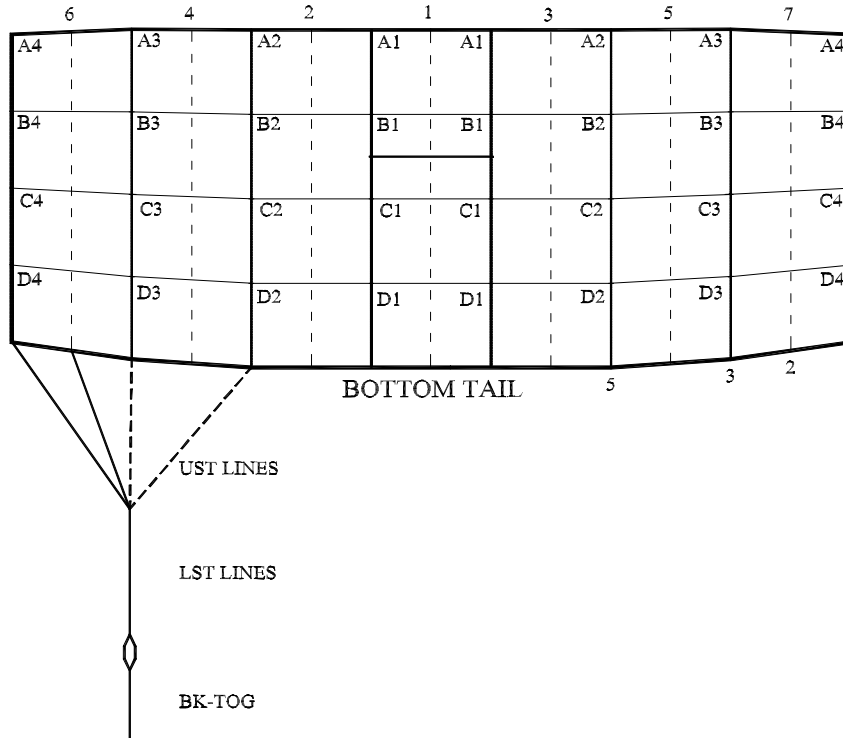


	SP-097	SP-107	SP-120	SP-135
A1	96 1/8	101	106 7/8	113 3/8
A1-B1	2 1/8	2 1/4	2 3/8	2 5/8
A1-C1	7 3/4	8 1/8	8 3/4	9 3/8
A1-D1	15 3/8	16 3/8	17 3/8	18 5/8
A2	96 1/8	101	106 7/8	113 3/8
A2-B2	2 1/8	2 1/4	2 1/4	2 5/8
A2-C2	7 1/2	7 7/8	8 1/2	9 1/8
A2-D2	15 1/4	16 1/8	17 1/4	18 3/8
A3	96 1/8	100 7/8	106 7/8	113 3/8
A3-B3	2	2 1/8	2 1/4	2 1/2
A3-C3	6 7/8	7 1/4	7 3/4	8 3/8
A3-D3	14 1/4	15 1/8	16 1/8	17 1/4
A4	96	100 7/8	106 3/4	113 1/4
A4-B4	2	2 1/8	2 1/4	2 3/8
A4-C4	6	6 3/8	6 3/4	7 3/8
A4-D4	12 5/8	13 3/8	14 3/8	15 1/2
LST	67	70 3/8	74 5/8	77 1/8
A4-UST1	7 3/4	8 1/8	7 3/4	7 1/4
A4-UST2	7 3/4	8 1/8	7 3/4	7 1/4
A4-UST3	7 3/4	8 1/8	7 3/4	7 1/4
B STAB SLK	1/2	1/2	1/2	1/2
C STAB SLK	1	1	1	1
D STAB SLK	1 1/2	1 1/2	1 1/2	1 1/2
BK-TOG	19 1/2	22 1/2	21 5/8	23 3/4



Performance Designs, Inc  
 1300 E Int'l Speedway Blvd  
 DeLand FL 32724  
 Telephone: 386-738-2224  
 Fax: 386-734-8297

## LINE TRIM CHART FOR SPECTRE 150 - 230



	SP-150	SP-170	SP-190	SP-210	SP-230
A1	119 1/2	127 1/4	134 1/2	141 3/8	148
A1-B1	2 3/4	3	3 1/8	3 3/8	3 1/2
A1-C1	9 7/8	10 5/8	11 3/8	12	12 5/8
A1-D1	19 3/4	21 1/4	22 5/8	23 7/8	25 1/8
A2	119 1/2	127 1/4	134 1/2	141 3/8	148
A2-B2	2 3/4	3	3 1/8	3 3/8	3 1/2
A2-C2	9 5/8	10 3/8	11 1/8	11 3/4	12 3/8
A2-D2	19 5/8	21	22 3/8	23 5/8	24 7/8
A3	119 1/2	127 1/4	134 1/2	141 3/8	148
A3-B3	2 5/8	2 3/4	3	3 1/8	3 3/8
A3-C3	8 7/8	9 5/8	10 1/4	10 7/8	11 1/2
A3-D3	18 3/8	19 3/4	21 1/8	22 3/8	23 1/2
A4	119 3/8	127 1/8	134 3/8	141 1/4	147 7/8
A4-B4	2 5/8	2 3/4	3	3 1/8	3 1/4
A4-C4	7 7/8	8 1/2	9 1/8	9 5/8	10 1/4
A4-D4	16 1/2	17 3/4	18 7/8	20	21 1/8
LST	83 3/8	88 3/4	93 7/8	98 3/4	103 1/4
A4-UST1	9 3/4	10 3/8	10 7/8	11 1/2	12
A4-UST2	9 3/4	10 3/8	10 7/8	11 1/2	12
A4-UST3	9 3/4	10 3/8	10 7/8	11 1/2	12
A4-UST5	12 7/8	13 3/4	14 1/2	15 3/8	16
B STAB SLK	1/2	1/2	1/2	1/2	1/2
C STAB SLK	1	1	1	1	1
D STAB SLK	1 1/2	1 1/2	1 1/2	1 1/2	1 1/2
BK-TOG	24 3/4	26 1/8	27 3/8	28 5/8	29 3/4