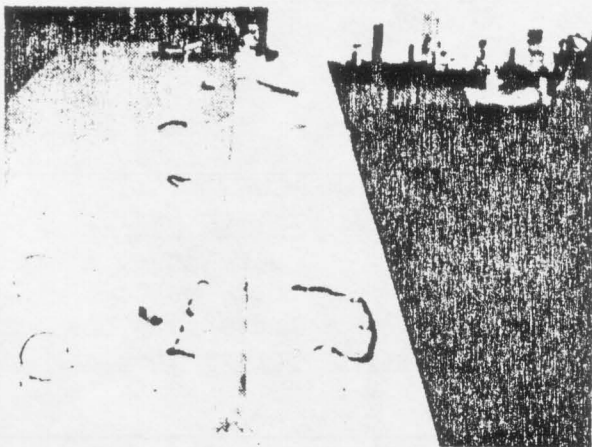
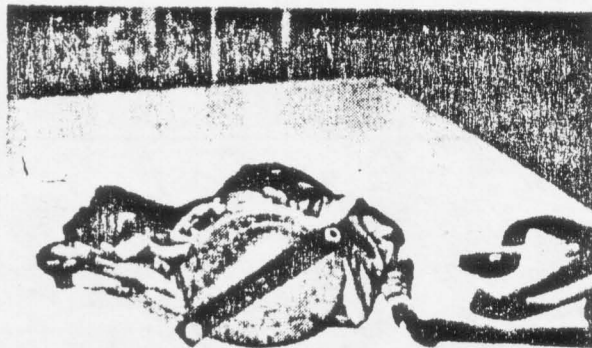


# RAPID TRANSIT SYSTEM -- RESERVE PACKING INSTRUCTIONS

Sky Supplies, Rt. 1, Box 894A, DeLand, FL 32720

## Parts List

1. Pilot Chute
2. Bridle line (type 4, 1")
3. Reserve canopy.
4. Harness/container assembly.  
(double container back assembly)



5. Ripcord. Two-pin, 33 inches long,  $6\frac{1}{2}$ " pin spacing. *→ 36" long, 6" pin spacing*
  - (a) Blast Handle model
  - (b) Martin-Baker model
  - (c) Clover Leaf model
6. Ripcord housing (23 inches long) *(FXC - housing 27" - Ripcord 23" - 6" pin spacing 9 1/2 - 12 1/2)*
7. Closing Loop -- 13 inches.
8. Pilot Chute Strap -- Two grommets set  $6\frac{1}{2}$ " apart.

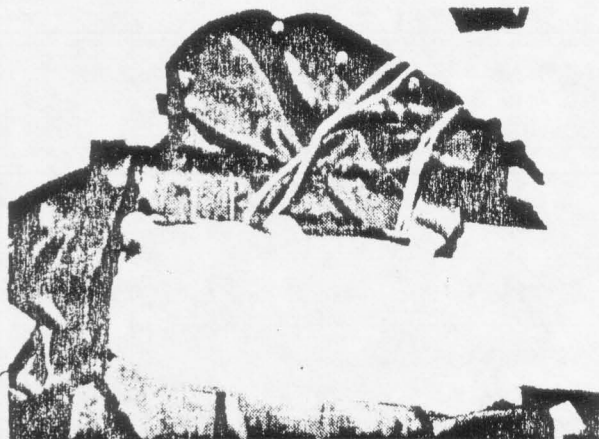
1. Tack the pilot chute strap to the crown of the pilot chute using waxed 5-cord or similar. Loop the bridle through the pilot chute and then to the apex of the canopy. Attach the canopy to the risers with connector links, insuring they are adequately tightened.

2. Lay the container on the table as if the wearer was face down and heads towards the canopy. The rear of the canopy should be up. Secure apex and apply tension.

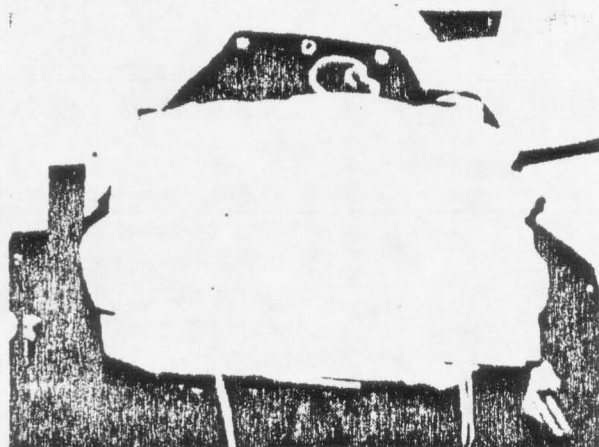
Inspect the entire assembly. Pleat the canopy normally and lay on the table with an equal number of gores on each side.

Fold the skirt up  $90^{\circ}$  so the lateral band is parallel to the radial seams. Fold each side of the canopy to the radial seam. Then fold again so the canopy is long folded in fifths. The canopy should be as narrow as possible.

Install diaper if canopy is so equipped.

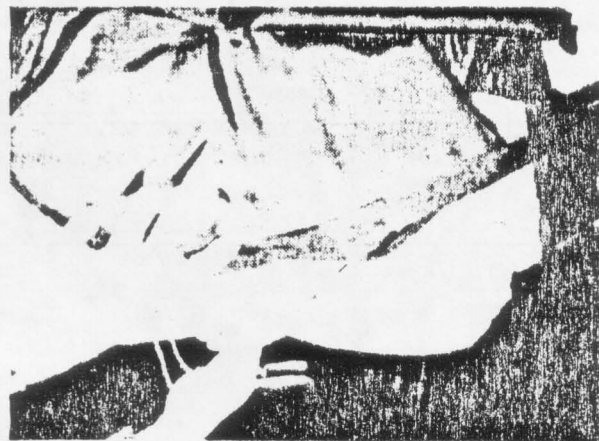


3. Place the risers in the container that the risers lie to the outside of the line stowing loops. The first line stow is placed on the wearer's bottom right. Continue stowing lines the width of the container until all are stowed. Place the skirt in the lower righthand corner of the container.

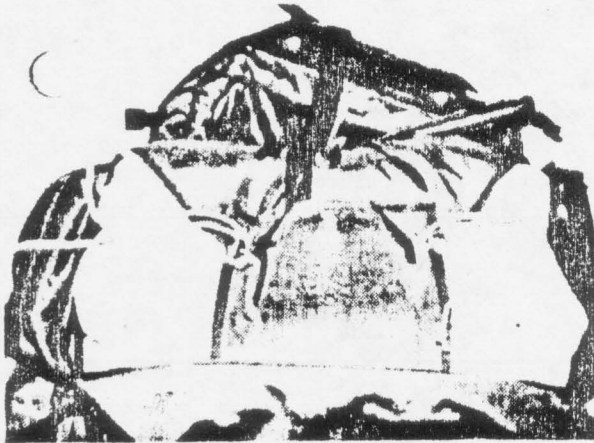


4. S-fold the canopy from side to side keeping it the full width of the container. DO NOT STACK THE CANOPY INTO THE CONTAINER.

Route the pull-up cords straight up through the folds in the canopy.



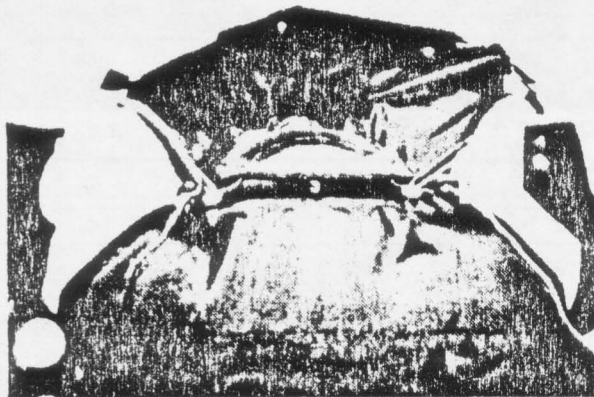
5. The flaps are numbered in the sequence they close. Route the pull-up cords through the grommets in Flap 1 and secure the locking loop with temporary locking pins.



6. Route the bridle to the top and close Flap #2 and pin.

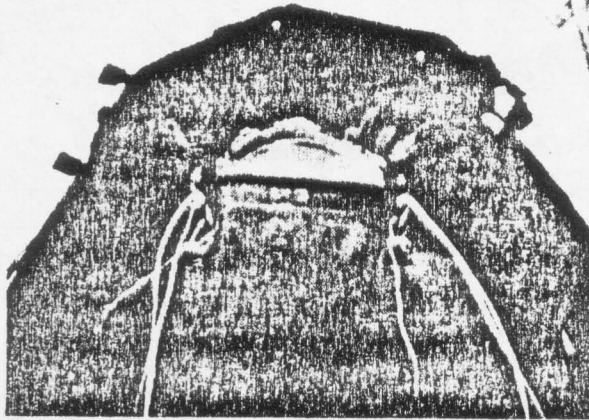


7. Neatly stow the bridle on top of Flap #2 and compress the pilot chute between the grommets. Tuck the canopy under the crown. Route pull-up cords through the grommets in the pilot chute strap and secure with temporary pins.

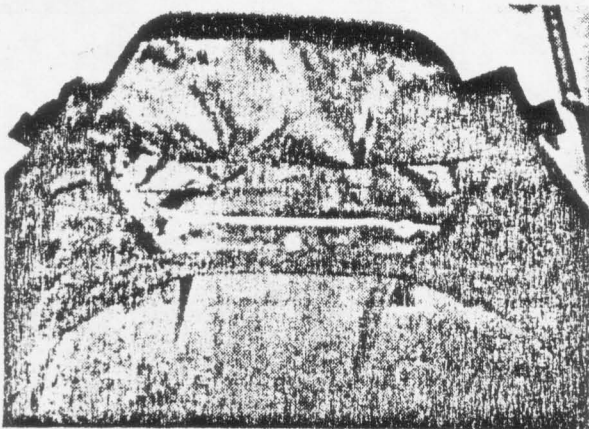


8. Bring Flap #3 up and over the pilot chute and route the pull-up cords through its grommets. Secure the flap with temporary locking pins.

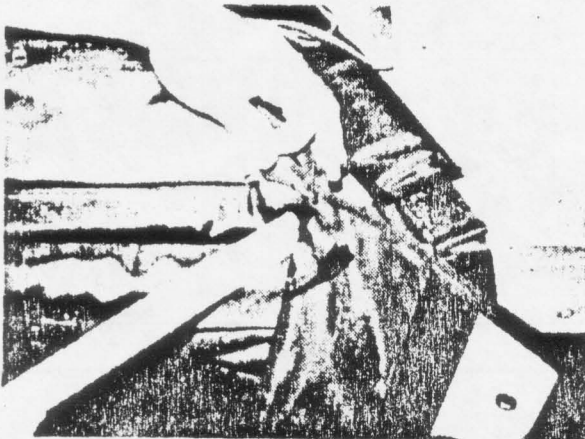




9. Close each side flap (Flaps #4) and pin.



10. Close the top outside flap (Flap #5) and secure with the ripcord pin. Carefully inspect the parachute to insure all temporary pins have been removed.



11. Dress. Seal on the last pin. Collect tools and log.