

Eagle Reserve

Packing Manual



NAA

North American Aerodynamics, Inc.
110 Carver Drive/Roxboro, NC 27573

INTRODUCTION

Welcome to the North American Aerodynamics family. We're confident that you will find your EAGLE SERIES reserve parachute to be well designed and constructed of the finest materials available.

Your EAGLE was made with pride in the the USA. It is one of the few reserve parachutes on the market today produced and tested to withstand opening shocks at 208 MPH.

Your openings, if necessary, will be at substantially slower airspeeds. You will find a deployment under a EAGLE reserve to be a extremely pleasant experience.

The EAGLE is responsive yet very forgiving in performance. The light toggle pressure and positive turning and flaring action combine to create a ride that will be both memorable and enjoyable.

Your EAGLE will provide you many years of service providing it is taken care of properly. For tips on how to get longer service life from your parachute see the section titled "Maintenance and Care" in this manual. Take care of your EAGLE as if your life depended on it. It just might.

RIGGER'S NOTES

The EAGLE reserve packing instructions cover only the packing of the canopy itself. Riggers must refer to the specific packing instructions for the applicable harness/container assembly being packed.

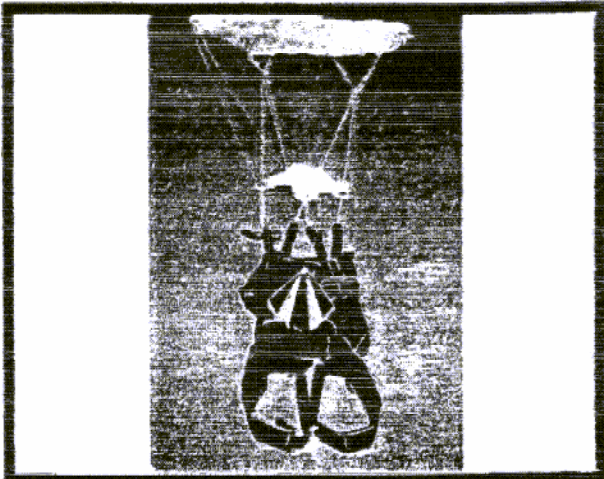
REQUIRED TOOLS

1. ADJUSTABLE WRENCH
2. PACKING WEIGHTS
3. MOLAR RETENTION STRAP
4. THIS MANUAL

WARNING:

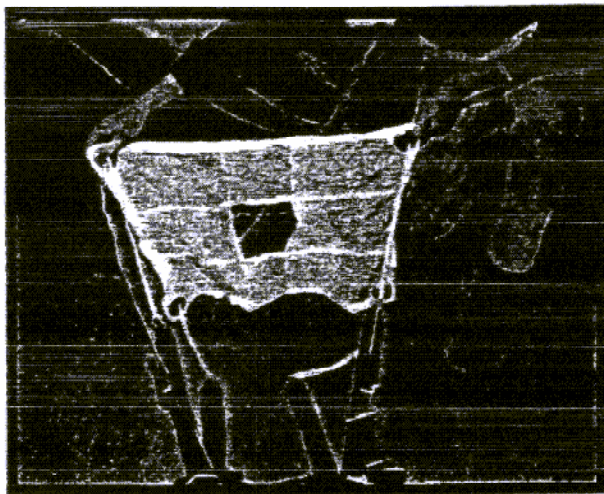
Parachuting is a high risk activity which may cause or result in injury or death.

EAGLE RESERVE PACK INSTRUCTIONS



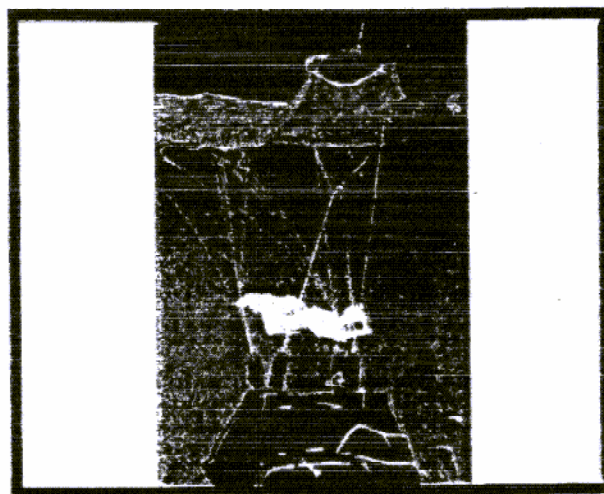
Step 1

Lay the canopy on its left side. Secure the harness to a fixed point.



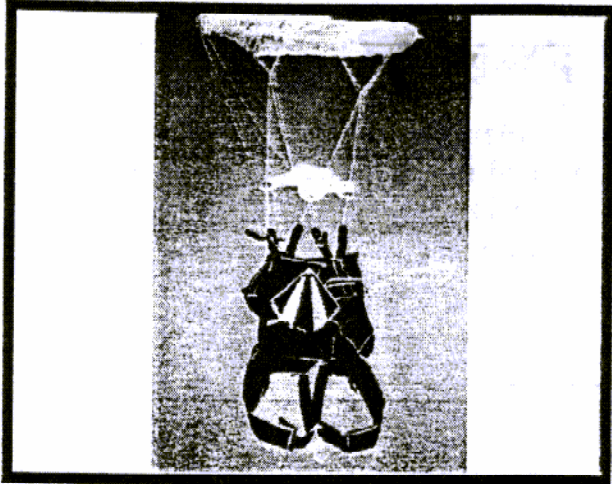
Step 2

Grasp the slider at the corners and lift the rear line groups. Ensure the slider and line groups are not twisted. The length of the slider is aligned with the span of the parachute.



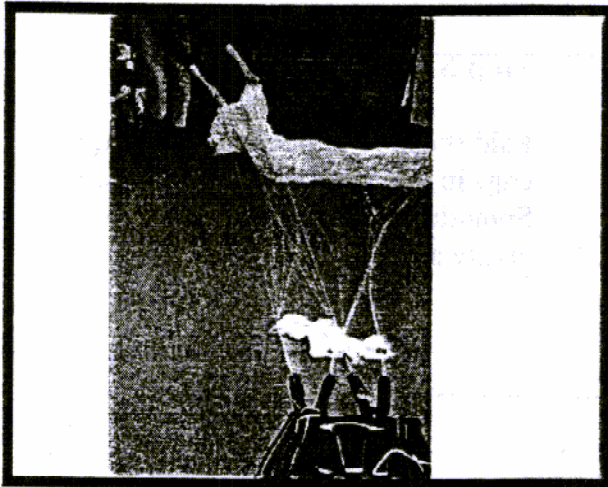
Step 3

Lift the outside "AB" and "CD" cascades and follow them to the connector links. Ensure they each run to the outside of position of each link on the front and rear right riser.



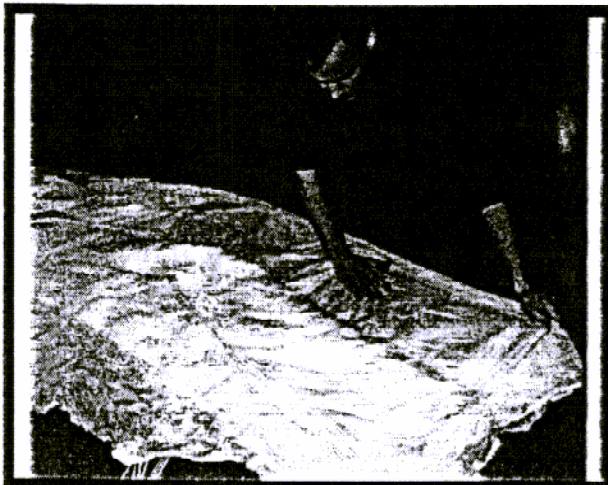
Step 4

Turn the canopy over and perform the line continuity check for the left side of the canopy.



Step 5

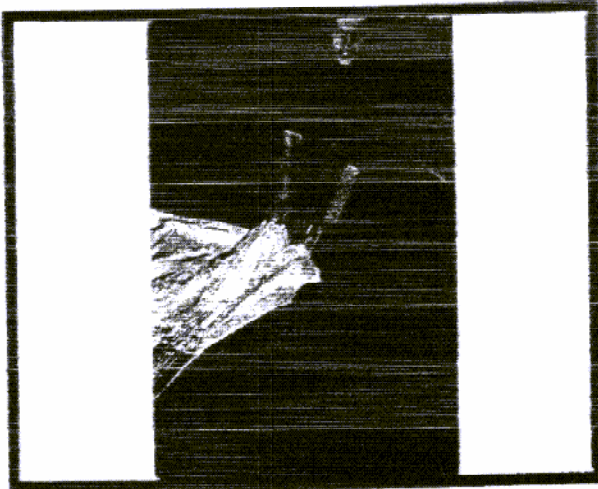
Separate the upper control lines. Ensure they are routed through the slider, through the guide rings on the risers, and they are not crossed over or under any other lines.



Step 6

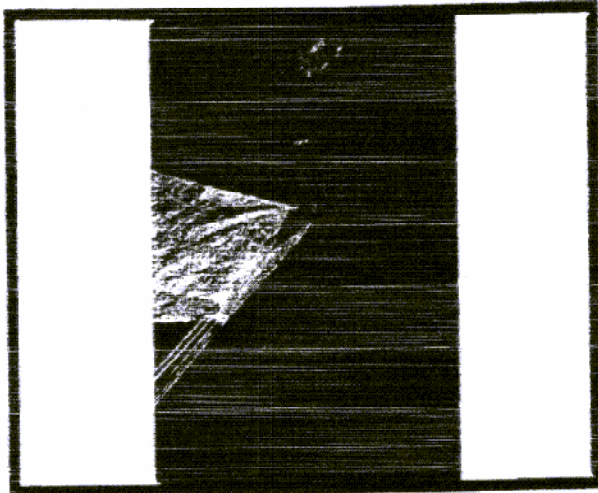
Pull out and smooth the high portions of the canopy. There are seven folds. Working from the tail to the nose, pull out each cell and smooth flat.

EAGLE RESERVE PACK INSTRUCTIONS



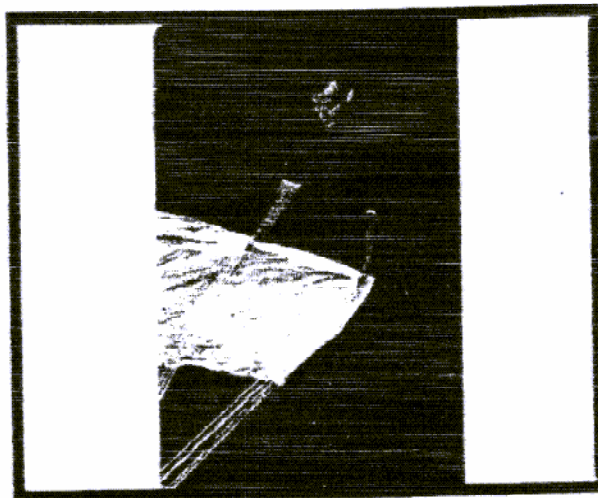
Step 7

Align the leading edges of the nose and smooth flat. Apply light tension and remove any slack from the "A" lines.



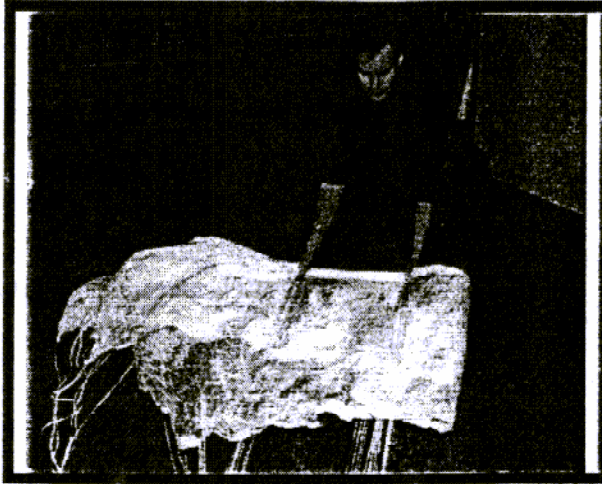
Step 8

Fold the nose under making a folded edge in line with the "A" line group. Smooth the air from the nose to create a neat fold



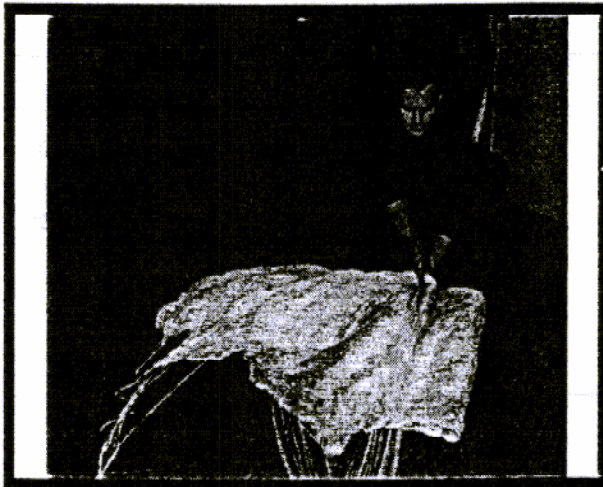
Step 9

Fold the "B" lines past the "A" lines and then back again to create a fold of canopy clear of both line groups. Lay the "B" lines on top of the "A" lines. Photo in step 10 shows completed fold.



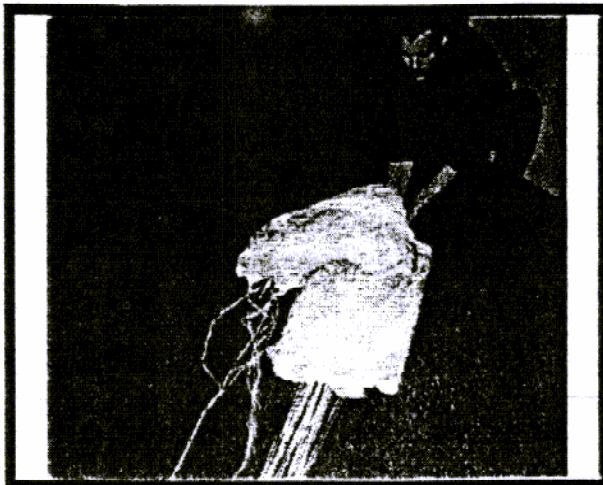
Step 10

Grasp the high portion of the canopy above the "C" lines and pull the "C" lines to the "A" and "B" lines.



Step 11

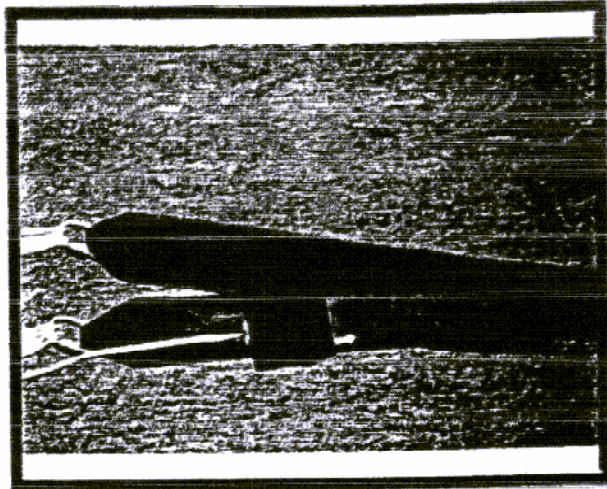
Lay the "C" lines on top of the "A" and "B" lines creating a fold opposite the fold created in step 9.



Step 12

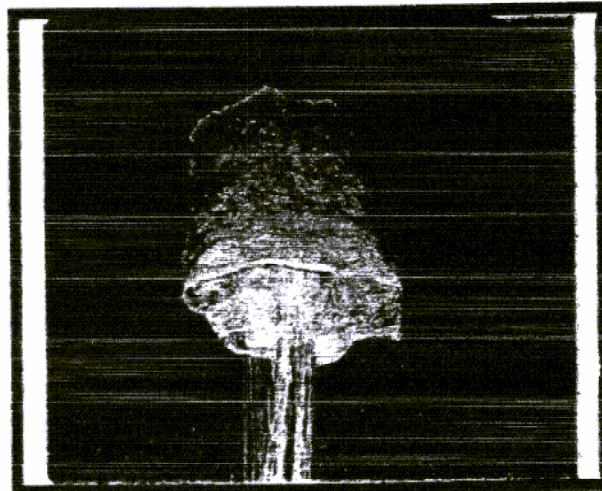
Grasp the high portion of the canopy above the "D" lines and lay the "D" lines on top of the "C", "B", and "A" lines.

EAGLE RESERVE PACK INSTRUCTIONS



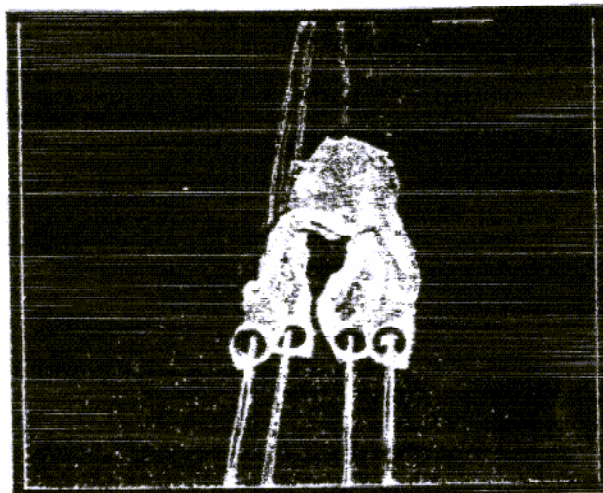
Step 13

Insert head of toggle through the cateye and mate velcro keeper with excess brake line "S" folded inside. Tack the head of the toggle to the riser with two turns rigger seal thread.



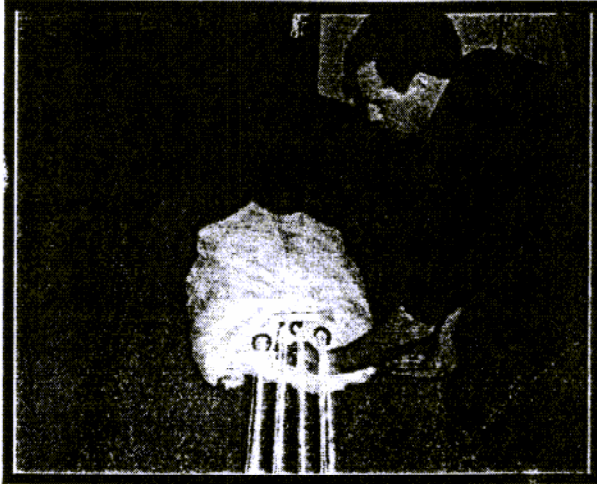
Step 14

Fold the tail with seven folds on each side. Subdivide the center cell evenly on top. Tuck two inches of the center cell under each side of the folded canopy.



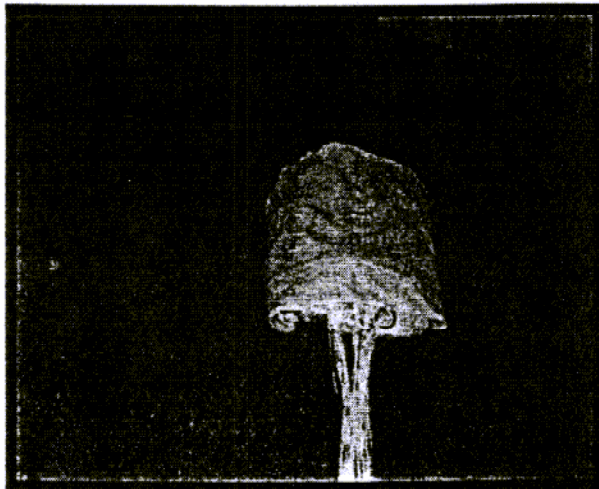
Step 15

Grasp the center of the slider and slowly pull towards the canopy. Lay the slider on top of the stabilizers. Fold the stabilizers over the slider.



Step 16

Place your hand under the slider and stabilizers and make a short fold placing the fold under the tail of the canopy.



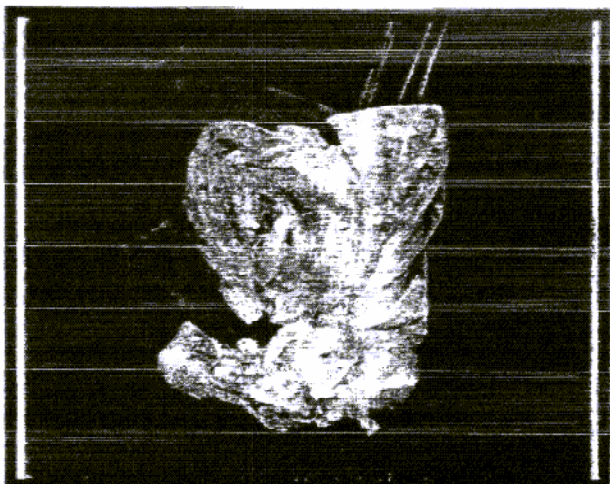
Step 17

Smooth the canopy flat and smooth all excess air from the material. The canopy should be folded to the approximate width of the deployment bag.



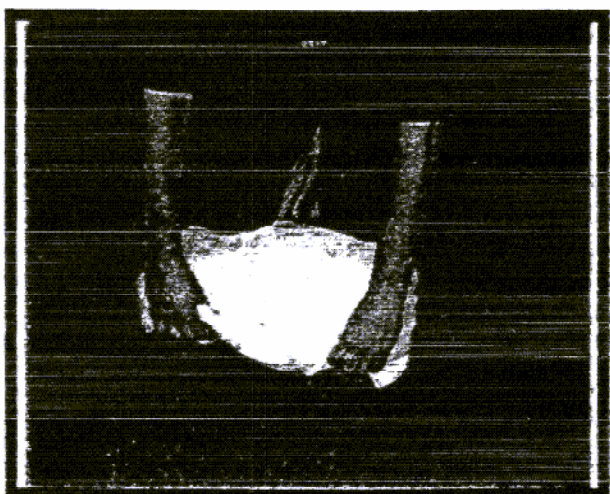
Step 18

With one hand on the fold created in step 16 and place your other hand under the canopy. Fold the canopy over itself on top of the fold made in step 16.



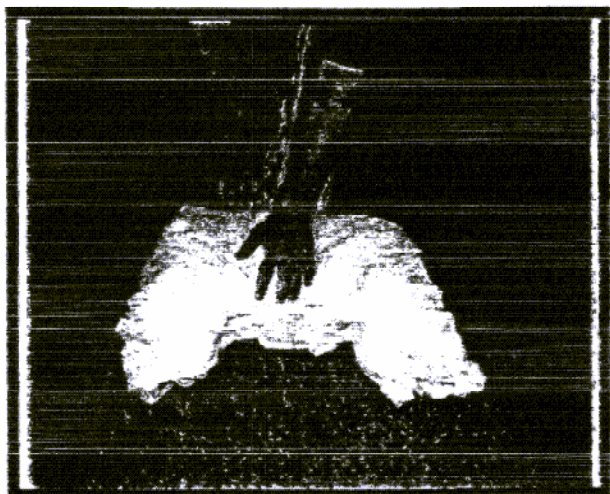
Step 19

Clear the nose so each cell is open and clear from all other folds. Fold the canopy back over itself on top of the fold made in Step 16.



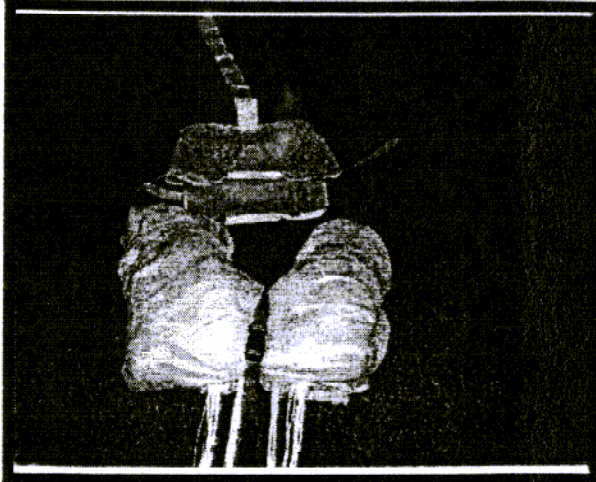
Step 20

With your knees securing the folds made in Steps 16 and 19, grasp the high portions of the canopy on the left and right side. Separate the left and right lobes to create the roots of the molar.



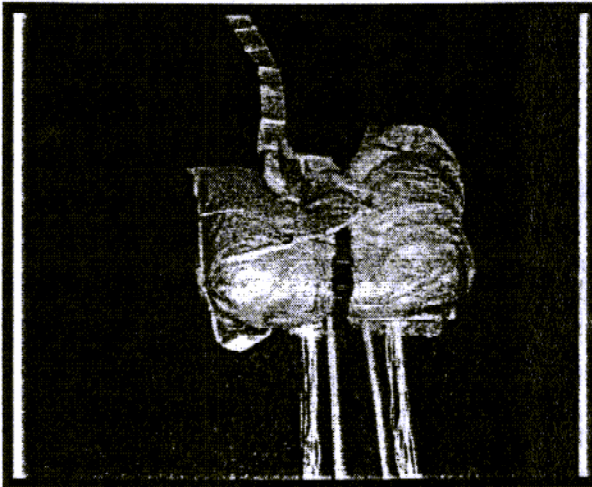
Step 21

Further shape the molar. Roll the top of the center cell compressing it towards the center. The nose is not included in this rolling motion and is left exposed.



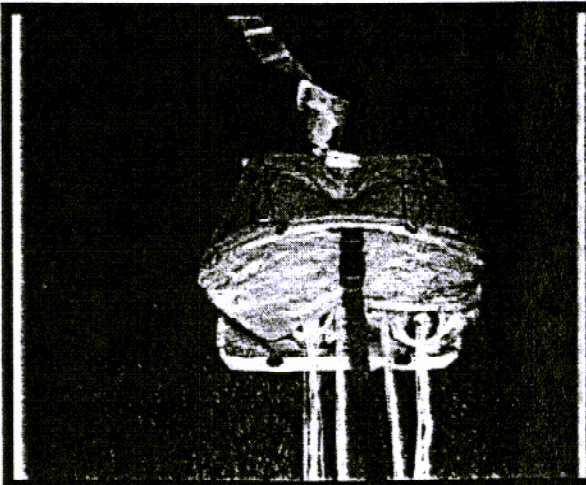
Step 22

Install molar strap around the parachute. Prepare the deployment bag by placing pullup cords in the elasticlocking loops.



Step 23

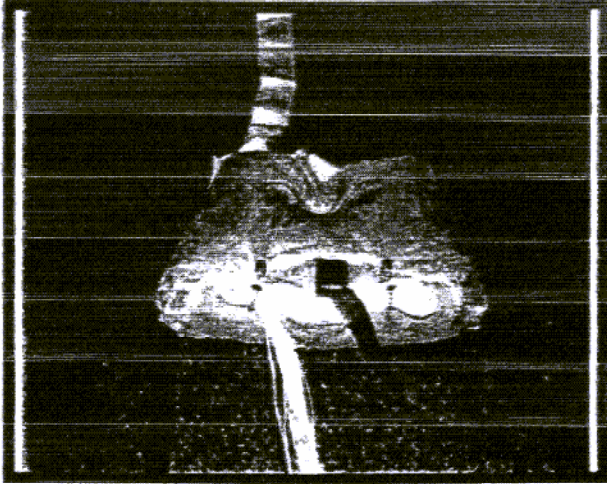
Place the canopy into the deployment bag one side at a time. Ensure the left root of the molar is fully seated in the deployment bag.



Step 24

Place the right side in the bag. Dress the bag and compress the excess air from the canopy.

EAGLE PACK INSTRUCTIONS



Step 25

Make locking stows approximately 1 to 2 inches long . Remove Molar Strap. Refer to harness/container instructions to complete the pack job.

MAINTENANCE AND CARE

Your Eagle reserve will last for many years with proper care. Take care of it as if your life depended on it.

ULTRA VIOLET RAYS -

It is an accepted fact in the parachute industry that ultraviolet rays from the sun damages nylon over time

Should you have to use your reserve, make sure you gather it up upon landing and immediately store it away from the harmful UV rays of the sun. Place in a gear bag until it can be repacked.

EXPOSURE TO WATER -

Should your parachute become wet after jumping in the rain, it should be allowed to dry in a garage, spare room, hangar, or other suitable space. Do not hang outside on a clothesline (see Ultraviolet Rays).

Do not place a parachute into a clothes dryer.

Salt Water - If you land in salt water, you should triple rinse the canopy immediately in fresh water - a kiddie pool or bath tub is suitable. Do not allow the canopy to dry with saltwater on it.

NORMAL EXPOSURE TO DIRT -

The best way to keep a parachute in good condition is not to get it dirty. Never drag your canopy over the ground. If you do however, do not put it in a washing machine.

The best way to clean dirt from a parachute is to spread the canopy out on a clean flat surface and wipe the affected area with a clean damp cloth. Ring out all excess water and work small areas at a time.

EXPOSURE TO GREASE -

Grease may be removed by using a mild solution of dishwashing soap and warm water. Discoloration of the area will remain but the excess grease should be removed to prevent further contamination of the fabric. Your rigger should perform a strength test after cleaning and drying

LONG TERM STORAGE

We recommend if you plan to stop jumping for more than six months, you unpack your reserve. Store your parachute in a gear bag in a climate controlled environment. Attics and basements are not suitable storage areas.